

For Research Use Only

# Anti-Human Siglec-8 Rabbit Recombinant Antibody, PBS Only

Catalog Number: 98177-1-PBS



## Basic Information

Catalog Number:

98177-1-PBS

Size:

1mg, 2 mg/ml

Source:

Rabbit

Isotype:

IgG

GenBank Accession Number:

BC053319

GeneID (NCBI):

27181

UNIPROT ID:

Q9NYZ4

Full Name:

sialic acid binding Ig-like lectin 8

Calculated MW:

499 aa, 54 kDa

Purification Method:

Protein A purification

CloneNo.:

241275A5

## Applications

Tested Applications:

FC

Species Specificity:

human

## Background Information

Sialic acid-binding Ig-like lectin 8 (Siglec-8), also known as SAF2, is a sialic acid-binding immunoglobulin-like lectin that belongs to the SIGLEC family of the Ig superfamily (PMID: 10856141). Siglec-8 is a single-pass transmembrane protein containing three extracellular immunoglobulin-like domains, a transmembrane region, and a cytoplasmic tail (PMID: 10625619). It is an inhibitory receptor selectively expressed on human mast cells and eosinophils, and at low levels on basophils (PMID: 10856141; 33374255). Engagement of Siglec-8 with antibody results in inhibiting IgE-mediated mast cell responses and reducing allergic inflammation (PMID: 32814824).

## Storage

Storage:

Store at -80°C.

Storage Buffer:

PBS Only

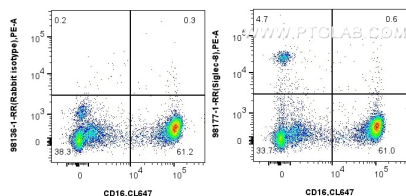
For technical support and original validation data for this product please contact:

T: 1 (888) 4PTGLAB (1-888-478-4522) (toll free  
in USA), or 1(312) 455-8498 (outside USA)

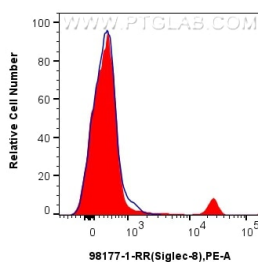
E: [proteintech@ptglab.com](mailto:proteintech@ptglab.com)  
W: [ptglab.com](http://ptglab.com)

This product is exclusively available under Proteintech Group brand and is not available to purchase from any other manufacturer.

## Selected Validation Data



1x10<sup>6</sup> human peripheral blood leukocytes were surface stained with 0.25 ug Anti-Human Siglec-8 Rabbit Recombinant Antibody (98177-1-RR, Clone: 241275A5) or Rabbit IgG Isotype Control Recombinant Antibody (98136-1-RR, Clone: 240953C9), and PE-conjugated Goat Anti-Rabbit IgG. Cells were co-stained with CoraLite® Plus 647 Anti-Human CD16. Cells were not fixed. This data was developed using the same antibody clone with 98177-1-PBS in a



1x10<sup>6</sup> human peripheral blood leukocytes were surface stained with 0.25 ug Anti-Human Siglec-8 Rabbit Recombinant Antibody (98177-1-RR, Clone: 241275A5) (red) or Rabbit IgG Isotype Control Recombinant Antibody (98136-1-RR, Clone: 240953C9) (blue), and PE-conjugated Goat Anti-Rabbit IgG. Cells were not fixed. This data was developed using the same antibody clone with 98177-1-PBS in a different storage buffer formulation.