

For Research Use Only

# Anti-Human CD155/PVR Rabbit Recombinant Antibody, PBS Only

Catalog Number: 98186-1-PBS



## Basic Information

### Catalog Number:

98186-1-PBS

### Size:

1mg , 2 mg/ml

### Source:

Rabbit

### Isotype:

IgG

### GenBank Accession Number:

BC015542

### GeneID (NCBI):

5817

### UNIPROT ID:

P15151

### Full Name:

poliovirus receptor

### Calculated MW:

45 kDa

### Purification Method:

Protein A purification

### CloneNo.:

241405G8

## Applications

### Tested Applications:

FC

### Species Specificity:

human

## Background Information

CD155, also known as PVR, is a type I transmembrane glycoprotein in the immunoglobulin superfamily. It contains three extracellular immunoglobulin-like domains, D1-D3, of which D1 is recognized by the virus. Mature human CD155 consists of a 323 amino acid extracellular domain with one N-terminal V-type and two C2-type Ig-like domains, a 24 amino acid transmembrane segment, and a 50 amino acid cytoplasmic tail. CD155 is thought to play a role in adhesion by interaction with the ECM component vitronectin as well as a role in NK killing of tumor cells. CD155 binds to two receptors of NK cells, CD96 and CD226, and accumulates at cell-cell contact sites, leading to the formation of mature immune synapses between NK cells and target cells. CD155 serves as the entry receptor for poliovirus and thereby mediates human susceptibility to poliovirus infection.

## Storage

### Storage:

Store at -80°C.

### Storage Buffer:

PBS Only

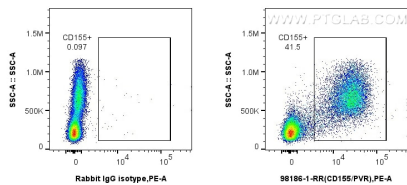
For technical support and original validation data for this product please contact:

T: 1 (888) 4PTGLAB (1-888-478-4522) (toll free in USA), or 1(312) 455-8498 (outside USA)

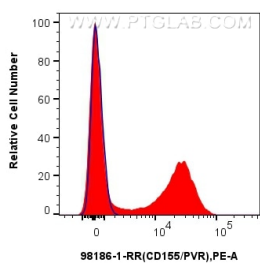
E: [proteintech@ptglab.com](mailto:proteintech@ptglab.com)  
W: [ptglab.com](http://ptglab.com)

This product is exclusively available under Proteintech Group brand and is not available to purchase from any other manufacturer.

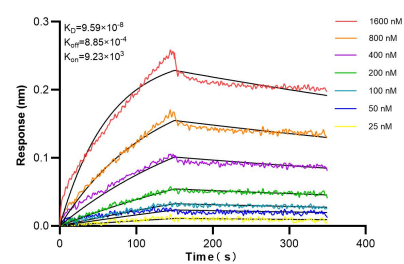
Selected Validation Data



1x10<sup>6</sup> human PBMCs were surface stained with 0.25 ug Anti-Human CD155/PVR Rabbit Recombinant Antibody (98186-1-RR, Clone: 241405G8) or Rabbit IgG Isotype Control Recombinant Antibody (98136-1-RR, Clone: 240953C9), and PE-Conjugated Goat Anti-Rabbit IgG(H+L). Cells were incubated with FC Receptor Block prior to staining. Cells were not fixed. This data was developed using the same antibody clone with 98186-1-PBS in a different storage buffer formulation.



1x10<sup>6</sup> human PBMCs were surface stained with 0.25 ug Anti-Human CD155/PVR Rabbit Recombinant Antibody (98186-1-RR, Clone: 241405G8) (red) or Rabbit IgG Isotype Control Recombinant Antibody (98136-1-RR, Clone: 240953C9) (blue), and PE-Conjugated Goat Anti-Rabbit IgG(H+L). Cells were incubated with FC Receptor Block prior to staining. Cells were not fixed. This data was developed using the same antibody clone with 98186-1-PBS in a different storage



Biolayer interferometry (BLI) kinetic assays of 98186-1-RR against Human CD155/PVR were performed. The affinity constant is 95.9 nM.