

For Research Use Only

# Anti-Human CD40 Rabbit Recombinant Antibody, PBS Only

Catalog Number: 98191-1-PBS



## Basic Information

### Catalog Number:

98191-1-PBS

### Size:

1mg, 2 mg/ml

### Source:

Rabbit

### Isotype:

IgG

### GenBank Accession Number:

NM\_001250.6

### GeneID (NCBI):

958

### ENSEMBL Gene ID:

ENSG00000101017

### UNIPROT ID:

P25942-1

### Full Name:

CD40 molecule, TNF receptor superfamily member 5

### Calculated MW:

31kDa

### Purification Method:

Protein A purification

### CloneNo.:

241760A9

## Applications

### Tested Applications:

FC

### Species Specificity:

human

## Background Information

CD40, also named as TNFRSF5 and Bp50, is a receptor for TNFSF5/CD40LG. It is a member of the TNFR superfamily and is responsible for the efficient activation of cell-mediated and humoral immune responses via activated T cells and B cells respectively. Defects in CD40 lead to hyper-IgM immunodeficiency syndrome type 3 (HIGM3) (PMID: 11675497). This is an autosomal recessive disorder that includes the inability of B cells to undergo isotype switching, a key step in the final differentiation of the humoral immune response, and an inability to mount an antibody-specific immune response.

## Storage

### Storage:

Store at -80°C.

### Storage Buffer:

PBS Only

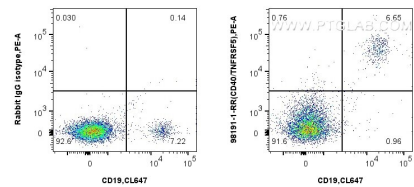
For technical support and original validation data for this product please contact:

T: 1 (888) 4PTGLAB (1-888-478-4522) (toll free in USA), or 1(312) 455-8498 (outside USA)

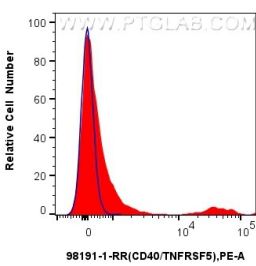
E: [proteintech@ptglab.com](mailto:proteintech@ptglab.com)  
W: [ptglab.com](http://ptglab.com)

This product is exclusively available under Proteintech Group brand and is not available to purchase from any other manufacturer.

Selected Validation Data



1x10<sup>6</sup> human PBMCs were surface stained with 0.25 ug Anti-Human CD40 Rabbit Recombinant Antibody (98191-1-RR, Clone: 241760A9) or 0.25 ug Rabbit IgG Isotype Control Recombinant Antibody (98136-1-RR, Clone: 240953C9), and PE-Conjugated Goat Anti-Rabbit IgG(H+L). Cells were co-stained with CoraLite® Plus 647 Anti-Human CD19 (4G7). Cells were incubated with FC Receptor Block prior to staining. Cells were not fixed. This data was developed using the same



1x10<sup>6</sup> human PBMCs were surface stained with 0.25 ug Anti-Human CD40 Rabbit Recombinant Antibody (98191-1-RR, Clone: 241760A9) (red) or 0.25 ug Rabbit IgG Isotype Control Recombinant Antibody (98136-1-RR, Clone: 240953C9) (blue), and PE-Conjugated Goat Anti-Rabbit IgG(H+L). Cells were incubated with FC Receptor Block prior to staining. Cells were not fixed. This data was developed using the same antibody clone with 98191-1-PBS in a different storage buffer