

For Research Use Only

Anti-Mouse CD2 Rabbit Recombinant Antibody, PBS Only

Catalog Number: 98193-1-PBS



Basic Information

Catalog Number:

98193-1-PBS

Size:

1mg, 2 mg/ml

Source:

Rabbit

Isotype:

IgG

GenBank Accession Number:

NM_013486.2

GeneID (NCBI):

12481

UNIPROT ID:

P08920

Full Name:

CD2 antigen

Calculated MW:

38 kDa

Purification Method:

Protein A purification

CloneNo.:

241548A5

Applications

Tested Applications:

FC

Species Specificity:

mouse

Background Information

CD2 is a cell surface glycoprotein present on a majority of thymocytes, all mature T cells and subset of NK cells but not on B lymphocytes. It is a pan T-cell marker. CD2 interacts with lymphocyte function-associated antigen (LFA-3/CD58) and CD48/BCM1 to mediate adhesion between T-cells and other cell types. CD2 is implicated in the triggering of T-cells, the cytoplasmic domain is implicated in the signaling function.

Storage

Storage:

Store at -80°C.

Storage Buffer:

PBS Only

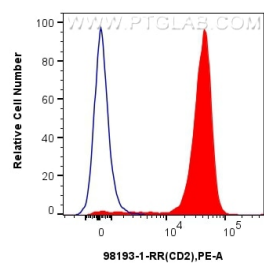
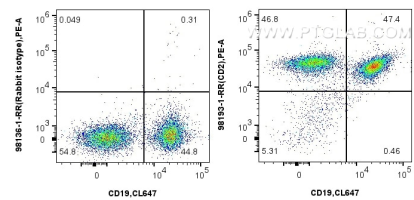
For technical support and original validation data for this product please contact:

T: 1 (888) 4PTGLAB (1-888-478-4522) (toll free in USA), or 1(312) 455-8498 (outside USA)

E: proteintech@ptglab.com
W: ptglab.com

This product is exclusively available under Proteintech Group brand and is not available to purchase from any other manufacturer.

Selected Validation Data



1x10⁶ mouse splenocytes were surface stained with 0.15 ug Anti-Mouse CD2 Rabbit Recombinant Antibody (98193-1-RR, Clone: 241548A5) or Rabbit IgG Isotype Control Recombinant Antibody (98136-1-RR, Clone: 240953C9) and PE-conjugated Goat Anti-Rabbit IgG. Cells were co-stained with CoraLite® Plus 647 Anti-Mouse CD19. Cells were not fixed. This data was developed using the same antibody clone with 98193-1-PBS in a different storage buffer formulation.

1x10⁶ mouse splenocytes were surface stained with 0.15 ug Anti-Mouse CD2 Rabbit Recombinant Antibody (98193-1-RR, Clone:241548A5) (red) or Rabbit IgG Isotype Control Recombinant Antibody (98136-1-RR, Clone: 240953C9) (blue) and PE-conjugated Goat Anti-Rabbit IgG. Cells were not fixed. This data was developed using the same antibody clone with 98193-1-PBS in a different storage buffer formulation.