

For Research Use Only

Anti-Mouse CCL3 Rabbit Recombinant Antibody

Catalog Number: 98194-1-RR



Basic Information

Catalog Number: 98194-1-RR	GenBank Accession Number: NM_011337	Purification Method: Protein A purification
Size: 100ug , 1000 µg/ml	GeneID (NCBI): 20302	CloneNo.: 241695B10
Source: Rabbit	UNIPROT ID: P10855	
Isotype: IgG	Full Name: chemokine (C-C motif) ligand 3	
	Calculated MW: 10kd	

Applications

Tested Applications:
FC (Intra)

Species Specificity:
mouse

Background Information

Chemokine (C-C motif) ligand 3 (CCL3), also known as MIP-1α, belongs to the family of chemokines. CCL3 has been found in the central nervous system and its cognate receptors, CCR1 and CCR5, have been reported to be expressed by astrocytes, microglia and neurons. CCL3 and its receptors, CCR1 and CCR5, also contribute to the development of bone disease in multiple myeloma by supporting tumor growth and regulating osteoclast differentiation. CCL3 is also associated with the regulation of cell growth, angiogenesis, and metastasis of different tumors such as melanoma, renal cell carcinoma, and colorectal cancer. Moreover, CCL3 enhances cell migration and metastasis by up-regulating matrix metalloproteinase-2 (MMP)-2 expression in chondrosarcoma cells.

Storage

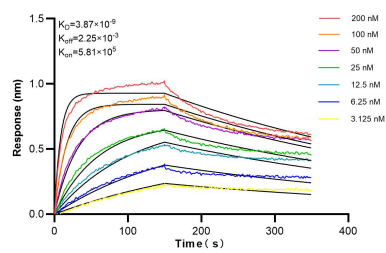
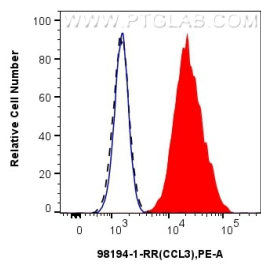
Storage:
Store at 2 - 8°C. Stable for one year after shipment.

Storage Buffer:
PBS with 0.09% sodium azide, pH 7.3.

For technical support and original validation data for this product please contact:
T: 1 (888) 4PTGLAB (1-888-478-4522) (toll free in USA), or 1(312) 455-8498 (outside USA)
E: proteintech@ptglab.com
W: ptglab.com

This product is exclusively available under Proteintech Group brand and is not available to purchase from any other manufacturer.

Selected Validation Data



1x10⁶ LPS and Brefeldin A treated J774A.1 cells were intracellularly stained with 0.25 ug Anti-Mouse CCL3 Rabbit Recombinant Antibody (98194-1-RR, Clone:241695B10) (red) or Rabbit IgG Isotype Control Recombinant Antibody (98136-1-RR, Clone: 240953C9) (blue), and PE-conjugated Goat Anti-Rabbit IgG. 1x10⁶ untreated J774A.1 cells were intracellularly stained with 0.25 ug Anti-Mouse CCL3 Rabbit Recombinant Antibody (98194-1-RR, Clone: 241695B10)



Biolayer interferometry (BLI) kinetic assays of 98194-1-RR against Mouse CCL3 were performed. The affinity constant is 3.87 nM.