

For Research Use Only

# Anti-Mouse CSF2RA/CD116 Rabbit Recombinant Antibody, PBS Only

Catalog Number: 98196-1-PBS



## Basic Information

Catalog Number:

98196-1-PBS

Size:

1mg, 2 mg/ml

Source:

Rabbit

Isotype:

IgG

GenBank Accession Number:

NM\_009970.2

GeneID (NCBI):

12982

UNIPROT ID:

Q00941

Full Name:

colony stimulating factor 2 receptor,  
alpha, low-affinity (granulocyte-  
macrophage)

Calculated MW:

42kDa

Purification Method:

Protein A purification

CloneNo.:

241889A5

## Applications

Tested Applications:

FC

Species Specificity:

mouse

## Background Information

CD116, also named as CSF2RA CDw116 CSF2RAX CSF2RAY CSF2RX CSF2RY GM-CSF-R-alpha GMCSFR and GMR, is a low affinity receptor for granulocyte-macrophage colony-stimulating factor. CD116 transduces a signal that results in the proliferation, differentiation, and functional activation of hematopoietic cells.

## Storage

Storage:

Store at -80°C.

Storage Buffer:

PBS Only

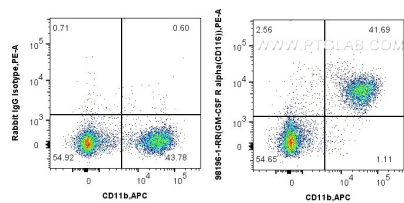
For technical support and original validation data for this product please contact:

T: 1 (888) 4PTGLAB (1-888-478-4522) (toll free  
in USA), or 1(312) 455-8498 (outside USA)

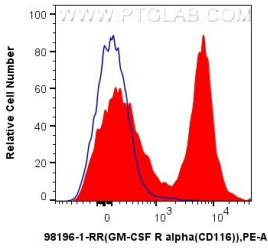
E: [proteintech@ptglab.com](mailto:proteintech@ptglab.com)  
W: [ptglab.com](http://ptglab.com)

This product is exclusively available under Proteintech Group brand and is not available to purchase from any other manufacturer.

Selected Validation Data



1x10<sup>6</sup> mouse bone marrow cells were surface stained with 0.25 ug Anti-Mouse CSF2RA/CD116 Rabbit Recombinant Antibody (98196-1-RR, Clone: 241889A5) or Rabbit IgG Isotype Control Recombinant Antibody (98136-1-RR, Clone: 240953C9), and PE-Conjugated Goat Anti-Rabbit IgG(H+L). Cells were co-stained with APC Anti-Mouse CD11b. Cells were not fixed. This data was developed using the same antibody clone with 98196-1-PBS in a



1x10<sup>6</sup> mouse bone marrow cells were surface stained with 0.25 ug Anti-Mouse CSF2RA/CD116 Rabbit Recombinant Antibody (98196-1-RR, Clone: 241889A5) (red) or Rabbit IgG Isotype Control Recombinant Antibody (98136-1-RR, Clone: 240953C9) (blue), and PE-Conjugated Goat Anti-Rabbit IgG(H+L). Cells were not fixed. This data was developed using the same antibody clone with 98196-1-PBS in a different storage buffer formulation.