

For Research Use Only

IL-13Ra1/CD213a1 Recombinant antibody

Catalog Number: 98216-1-RR



Basic Information

Catalog Number:

98216-1-RR

Size:

100ug , 1000 µg/ml

Source:

Rabbit

Isotype:

IgG

GenBank Accession Number:

BC009960

GeneID (NCBI):

3597

UNIPROT ID:

P78552

Full Name:

interleukin 13 receptor, alpha 1

Calculated MW:

49 kDa

Purification Method:

Protein A purification

CloneNo.:

241834A1

Applications

Tested Applications:

FC

Species Specificity:

human

Background Information

IL-13 is an immunoregulatory cytokine secreted predominantly by activated T-helper 2 (Th2) cells and performs multiple functions through a complex receptor system comprised of IL-4Ra and two IL-13 binding proteins, IL-13Ra1 and IL-13Ra2 (PMID: 12704343). IL-13Ra1 is a glycosylated transmembrane protein (PMID: 10856136; 9723655). IL-13Ra1 is expressed on a wide range of cells including B cells, monocytes, macrophages, basophils, mast cells, and endothelial cells (PMID: 10856136; 31866859). IL-13 binding to the IL-4Ra/IL-13Ra1 complex leads to activation of JAK1, JAK2, and TYK2 and subsequent phosphorylation of STAT6 and STAT3 (PMID: 31866859).

Storage

Storage:

Store at 2 - 8°C. Stable for one year after shipment.

Storage Buffer:

PBS with 0.09% sodium azide, pH 7.3.

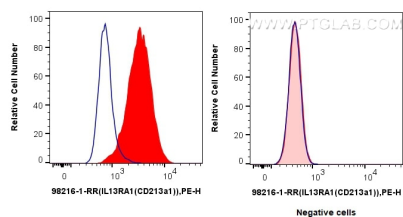
For technical support and original validation data for this product please contact:

T: 1 (888) 4PTGLAB (1-888-478-4522) (toll free in USA), or 1(312) 455-8498 (outside USA)

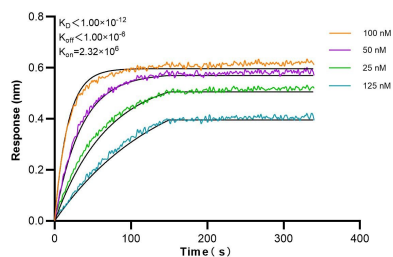
E: proteintech@ptglab.com
W: ptglab.com

This product is exclusively available under Proteintech Group brand and is not available to purchase from any other manufacturer.

Selected Validation Data



1x10⁶ MCF-7 cells (left) or Jurkat cells (right) were surface stained with 0.125 ug Anti-Human IL-13Ra1/CD213a1 Rabbit Recombinant Antibody (98216-1-RR, Clone: 241834A1) (red) or Rabbit IgG Isotype Control Recombinant Antibody (98136-1-RR, Clone: 240953C9) (blue), and PE-Conjugated Goat Anti-Rabbit IgG(H+L). Cells were not fixed.



Biolayer interferometry (BLI) kinetic assays of 98216-1-RR against Human IL-13Ra1/CD213a1 were performed. The affinity constant is below 1 pM.