

For Research Use Only

Anti-Mouse CD64 Rabbit Recombinant Antibody, PBS Only

Catalog Number: 98218-1-PBS



Basic Information

Catalog Number:

98218-1-PBS

Size:

1mg, 2 mg/ml

Source:

Rabbit

Isotype:

IgG

GenBank Accession Number:

NM_010186.5

GeneID (NCBI):

14129

UNIPROT ID:

P26151

Full Name:

Fc receptor, IgG, high affinity I

Calculated MW:

45 kDa

Purification Method:

Protein A purification

CloneNo.:

241809A6

Applications

Tested Applications:

FC

Species Specificity:

mouse

Background Information

Fcγ receptor comprise a multigene family of integral membrane glycoproteins that exhibit complex activation or inhibitory effects on cell functions after aggregation by complexed immunoglobulin G (IgG) (PMID: 17005690). CD64, also known as Fcγ R1A, is a high-affinity receptor for the Fc region of IgG. It is expressed by monocytes/macrophages, activated neutrophils, dendritic cells, and early myeloid cells (PMID: 23293080; 19642859; 7680917). CD64 functions in both innate and adaptive immune responses.

Storage

Storage:

Store at -80°C.

Storage Buffer:

PBS Only

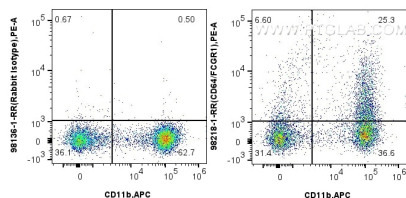
For technical support and original validation data for this product please contact:

T: 1 (888) 4PTGLAB (1-888-478-4522) (toll free in USA), or 1(312) 455-8498 (outside USA)

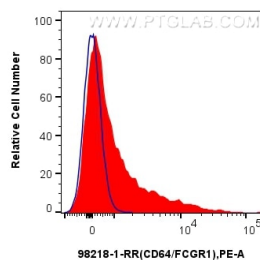
E: proteintech@ptglab.com
W: ptglab.com

This product is exclusively available under Proteintech Group brand and is not available to purchase from any other manufacturer.

Selected Validation Data



1x10⁶ mouse bone marrow cells were surface stained with 0.25 ug Anti-Mouse CD64 Rabbit Recombinant Antibody (98218-1-RR, Clone: 241809A6) or Rabbit IgG Isotype Control Recombinant Antibody (98136-1-RR, Clone: 240953C9), and PE-Conjugated Goat Anti-Rabbit IgG(H+L). Cells were co-stained with APC Anti-Mouse CD11b (M1/70) (APC-65055, Clone: M1/70). Cells were not fixed. This data was developed using the same antibody clone with 98218-1-PBS in a



1x10⁶ mouse bone marrow cells were surface stained with 0.25 ug Anti-Mouse CD64 Rabbit Recombinant Antibody (98218-1-RR, Clone: 241809A6) or Rabbit IgG Isotype Control Recombinant Antibody (98136-1-RR, Clone: 240953C9), and PE-Conjugated Goat Anti-Rabbit IgG(H+L). Cells were not fixed. This data was developed using the same antibody clone with 98218-1-PBS in a different storage buffer formulation.