

For Research Use Only

# Anti-Human C5AR1/CD88 Rabbit Recombinant Antibody, PBS Only

Catalog Number: 98226-1-PBS



## Basic Information

Catalog Number:

98226-1-PBS

Size:

1mg, 2 mg/ml

Source:

Rabbit

Isotype:

IgG

GenBank Accession Number:

NM\_001736.4

GeneID (NCBI):

728

UNIPROT ID:

P21730

Full Name:

complement component 5a receptor 1

Calculated MW:

39kDa

Purification Method:

Protein A purification

CloneNo.:

241712D4

## Applications

Tested Applications:

FC

Species Specificity:

human

## Background Information

C5aR, also named CD88, is a G protein-coupled receptor for the anaphylatoxin C5a, a cleavage product of the complement cascade. The C5a ligand is a proinflammatory component of host defense. C5aR is activated upon binding of the C5a molecule. Receptor activation stimulates chemotaxis, granule enzyme release, intracellular calcium release, and superoxide anion production.

## Storage

Storage:

Store at -80°C.

Storage Buffer:

PBS only

For technical support and original validation data for this product please contact:

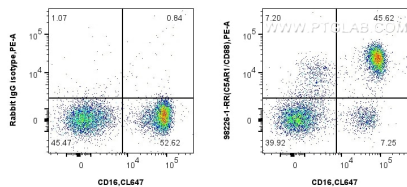
T: 1 (888) 4PTGLAB (1-888-478-4522) (toll free in USA), or 1(312) 455-8498 (outside USA)

E: [proteintech@ptglab.com](mailto:proteintech@ptglab.com)

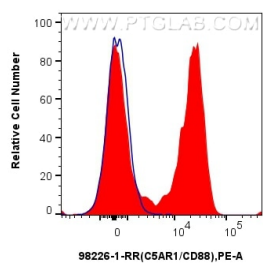
W: [ptglab.com](http://ptglab.com)

This product is exclusively available under Proteintech Group brand and is not available to purchase from any other manufacturer.

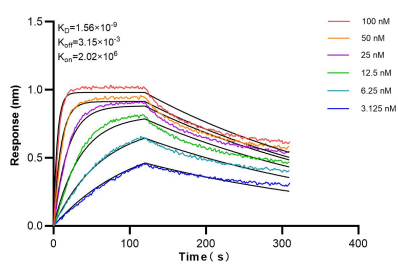
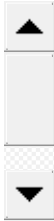
Selected Validation Data



1x10<sup>6</sup> human peripheral blood leukocytes were surface stained with 0.25 ug Anti-Human C5AR1/CD88 Rabbit Recombinant Antibody (98226-1-RR, Clone: 241712D4) or 0.25 ug Rabbit IgG Isotype Control Recombinant Antibody (98136-1-RR, Clone: 240953C9), and PE-Conjugated Goat Anti-Rabbit IgG(H+L). Cells were co-stained with CoraLite® Plus 647 Anti-Human CD16. Cells were incubated with FC Receptor Block prior to staining. Cells were not fixed. This data



1x10<sup>6</sup> human peripheral blood leukocytes were surface stained with 0.25 ug Anti-Human C5AR1/CD88 Rabbit Recombinant Antibody (98226-1-RR, Clone: 241712D4) (red) or 0.25 ug Rabbit IgG Isotype Control Recombinant Antibody (98136-1-RR, Clone: 240953C9) (blue), and PE-Conjugated Goat Anti-Rabbit IgG(H+L). Cells were incubated with FC Receptor Block prior to staining. Cells were not fixed. This data was developed using the same antibody clone



Biolayer interferometry (BLI) kinetic assays of 98226-1-RR against Human C5AR1/CD88 were performed. The affinity constant is 1.56 nM.