

For Research Use Only

# Anti-Human INSR/CD220 Rabbit Recombinant Antibody, PBS Only

Catalog Number: 98227-1-PBS



## Basic Information

Catalog Number:

98227-1-PBS

Size:

1mg, 2 mg/ml

Source:

Rabbit

Isotype:

IgG

GenBank Accession Number:

BC117172

GeneID (NCBI):

3643

UNIPROT ID:

P06213

Full Name:

INSR

Purification Method:

Protein A purification

CloneNo.:

241687A10

## Applications

Tested Applications:

FC

Species Specificity:

human

## Background Information

The biological effects of INS are mediated by a membrane-spanning cell surface receptor that has been shown to consist of disulfide-linked alpha-subunits (135 kDa) and beta-subunits (95 kDa) that are cleaved products of a common precursor. The binding of INS to the receptor extracellular domain results in intracellular activation of a tyrosine-specific kinase activity and the generation of signals that determine the cellular response (PMID: 2369896).

## Storage

Storage:

Store at -80°C.

Storage Buffer:

PBS only, pH7.3

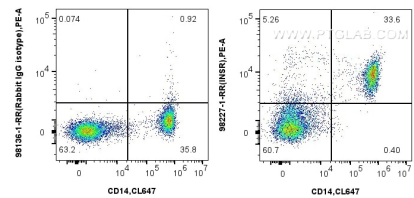
For technical support and original validation data for this product please contact:

T: 1 (888) 4PTGLAB (1-888-478-4522) (toll free in USA), or 1(312) 455-8498 (outside USA)

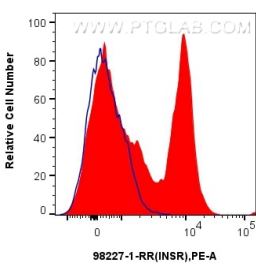
E: [proteintech@ptglab.com](mailto:proteintech@ptglab.com)  
W: [ptglab.com](http://ptglab.com)

This product is exclusively available under Proteintech Group brand and is not available to purchase from any other manufacturer.

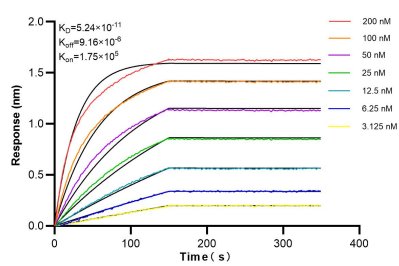
Selected Validation Data



1x10<sup>6</sup> human PBMCs were surface stained with 0.25 ug Anti-Human INSR/CD220 Rabbit Recombinant Antibody (98227-1-RR, Clone: 241687A10) or Rabbit IgG Isotype Control Recombinant Antibody (98136-1-RR, Clone: 240953C9) and PE-Conjugated Goat Anti-Rabbit IgG. Cells were co-stained with CoraLite® Plus 647 Anti-Human CD14. Cells were incubated with FC Receptor Block prior to staining. Cells were not fixed. This data was developed using the same antibody



1x10<sup>6</sup> FC receptor blocked human PBMCs were surface stained with 0.25 ug Anti-Human INSR/CD220 Rabbit Recombinant Antibody (98227-1-RR, Clone:241687A10) (red) or 0.25 ug Rabbit IgG Isotype Control Recombinant Antibody (98136-1-RR, Clone: 240953C9) (blue), and PE-Conjugated Goat Anti-Rabbit IgG(H+L). Cells were not fixed. This data was developed using the same antibody clone with 98227-1-PBS in a different storage buffer formulation.



Biolayer interferometry (BLI) kinetic assays of 98227-1-RR against Human INSR/CD220 were performed. The affinity constant is 52.4 pM.