

For Research Use Only

Anti-Human CD367/CLEC4A Rabbit Recombinant Antibody, PBS Only

Catalog Number: 98230-2-PBS



Basic Information

Catalog Number: 98230-2-PBS	GenBank Accession Number: NM_016184.4	Purification Method: Protein A purification
Size: 1mg, 2 mg/ml	GeneID (NCBI): 50856	CloneNo.: 241854D7
Source: Rabbit	UNIPROT ID: Q9UMR7-1	
Isotype: IgG	Full Name: C-type lectin domain family 4, member A	
Immunogen Catalog Number: EG1350	Calculated MW: 28 kDa	

Applications

Tested Applications:
FC

Species Specificity:
human

Background Information

CD367 (CLEC4A/DCIR) is a C-type lectin receptor primarily expressed on antigen-presenting cells. CD367 features a characteristic C-type lectin domain (CRD) in its extracellular region that recognizes carbohydrate ligands in a calcium-dependent manner and exhibits a restricted hematopoietic expression profile particularly useful for dendritic cell (DC) subset identification.

Storage

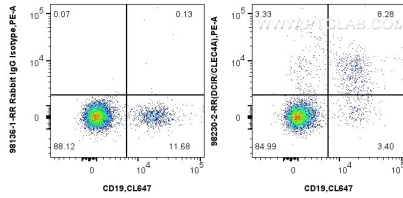
Storage:
Store at -80°C.

Storage Buffer:
PBS only, pH7.3

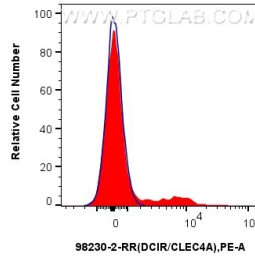
For technical support and original validation data for this product please contact:
T: 1 (888) 4PTGLAB (1-888-478-4522) (toll free in USA), or 1(312) 455-8498 (outside USA) E: proteintech@ptglab.com
W: ptglab.com

This product is exclusively available under Proteintech Group brand and is not available to purchase from any other manufacturer.

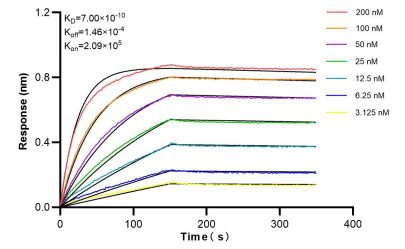
Selected Validation Data



1x10⁶ human peripheral blood lymphocytes were surface stained with 0.25 ug Anti-Human CD367/CLEC4A Rabbit RecAb (98230-2-RR, Clone: 241854D7) or 0.25 ug Rabbit IgG Isotype Control Recombinant Antibody (98136-1-RR, Clone: 240953C9), and PE-Conjugated Goat Anti-Rabbit IgG(H+L). Cells were then stained with CoraLite® Plus 647 Anti-Human CD19. Cells were incubated with FC Receptor Block prior to staining. Cells were not fixed.



1x10⁶ human peripheral blood lymphocytes were surface stained with 0.25 ug Anti-Human CD367/CLEC4A Rabbit RecAb (98230-2-RR, Clone: 241854D7) (red) or 0.25 ug Rabbit IgG Isotype Control Recombinant Antibody (98136-1-RR, Clone: 240953C9) (blue), and PE-Conjugated Goat Anti-Rabbit IgG(H+L). Cells were incubated with FC Receptor Block prior to staining. Cells were not fixed. Lymphocytes were gated. This data was developed using the same antibody



Biolayer interferometry (BLI) kinetic assays of 98230-2-RR against Human CD367/CLEC4A were performed. The affinity constant is 0.70 nM.