

For Research Use Only

Anti-Human CD367/CLEC4A Rabbit Recombinant Antibody

Catalog Number: 98230-2-RR



Basic Information

Catalog Number:

98230-2-RR

Size:

100ug, 1000 µg/ml

Source:

Rabbit

Isotype:

IgG

Immunogen Catalog Number:

EG1350

GenBank Accession Number:

NM_016184.4

GeneID (NCBI):

50856

UNIPROT ID:

Q9UMR7-1

Full Name:

C-type lectin domain family 4, member A

Calculated MW:

28 kDa

Purification Method:

Protein A purification

CloneNo.:

241854D7

Recommended Dilutions:

FC: 0.25 ug per 10⁶ cells in a 100 µl suspension

Applications

Tested Applications:

FC

Species Specificity:

human

Positive Controls:

FC : human peripheral blood lymphocytes,

Background Information

CD367 (CLEC4A/DCIR) is a C-type lectin receptor primarily expressed on antigen-presenting cells. CD367 features a characteristic C-type lectin domain (CRD) in its extracellular region that recognizes carbohydrate ligands in a calcium-dependent manner and exhibits a restricted hematopoietic expression profile particularly useful for dendritic cell (DC) subset identification.

Storage

Storage:

Store at 2 - 8°C. Stable for one year after shipment.

Storage Buffer:

PBS with 0.09% sodium azide, pH7.3

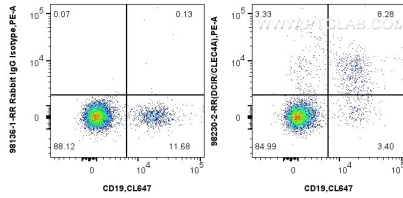
For technical support and original validation data for this product please contact:

T: 1 (888) 4PTGLAB (1-888-478-4522) (toll free in USA), or 1(312) 455-8498 (outside USA)

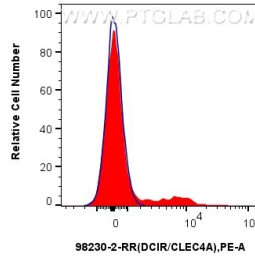
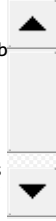
E: proteintech@ptglab.com
W: ptglab.com

This product is exclusively available under Proteintech Group brand and is not available to purchase from any other manufacturer.

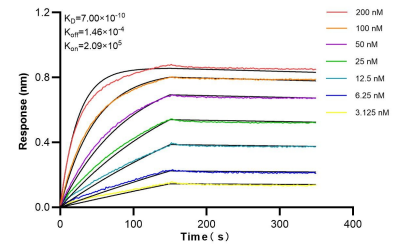
Selected Validation Data



1x10⁶ human peripheral blood lymphocytes were surface stained with 0.25 ug Anti-Human CD367/CLEC4A Rabbit RecAb (98230-2-RR, Clone: 241854D7) or 0.25 ug Rabbit IgG Isotype Control Recombinant Antibody (98136-1-RR, Clone: 240953C9), and PE-Conjugated Goat Anti-Rabbit IgG(H+L). Cells were then stained with CoraLite® Plus 647 Anti-Human CD19. Cells were incubated with FC Receptor Block prior to staining. Cells were not fixed.



1x10⁶ human peripheral blood lymphocytes were surface stained with 0.25 ug Anti-Human CD367/CLEC4A Rabbit RecAb (98230-2-RR, Clone: 241854D7) (red) or 0.25 ug Rabbit IgG Isotype Control Recombinant Antibody (98136-1-RR, Clone: 240953C9) (blue), and PE-Conjugated Goat Anti-Rabbit IgG(H+L). Cells were incubated with FC Receptor Block prior to staining. Cells were not fixed. Lymphocytes were gated.



Bilayer interferometry (BLI) kinetic assays of 98230-2-RR against Human CD367/CLEC4A were performed. The affinity constant is 0.70 nM.