

For Research Use Only

# Anti-Human IL-2RG/CD132 Rabbit Recombinant Antibody, PBS Only

Catalog Number: 98234-1-PBS



## Basic Information

**Catalog Number:**

98234-1-PBS

**Size:**

1mg, 2 mg/ml

**Source:**

Rabbit

**Isotype:**

IgG

**GenBank Accession Number:**

NM\_000206.3

**GeneID (NCBI):**

3561

**UNIPROT ID:**

P31785-1

**Full Name:**

interleukin 2 receptor, gamma  
(severe combined immunodeficiency)

**Calculated MW:**

NM\_000206.3

**Purification Method:**

Protein A purification

**CloneNo.:**

242020H6

## Applications

**Tested Applications:**

FC

**Species Specificity:**

human

## Background Information

The interleukin-2 receptor (IL-2R) is a heterotrimeric receptor consisting of three subunits, alpha (IL-2RA), beta (IL-2RB), and gamma (IL-2RG). IL-2RG, also known as CD132, is an important signaling component of many interleukin receptors, including those of interleukin -2, -4, -7 and -21, and is thus referred to as the common gamma chain. Mutations in the gene of IL-2RG cause X-linked severe combined immunodeficiency (XSCID), as well as X-linked combined immunodeficiency (XCID), a less severe immunodeficiency disorder.

## Storage

**Storage:**

Store at -80°C.

**Storage Buffer:**

PBS Only

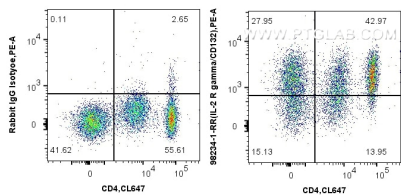
For technical support and original validation data for this product please contact:

T: 1 (888) 4PTGLAB (1-888-478-4522) (toll free in USA), or 1(312) 455-8498 (outside USA)

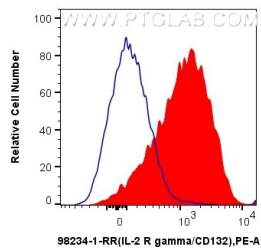
E: [proteintech@ptglab.com](mailto:proteintech@ptglab.com)  
W: [ptglab.com](http://ptglab.com)

This product is exclusively available under Proteintech Group brand and is not available to purchase from any other manufacturer.

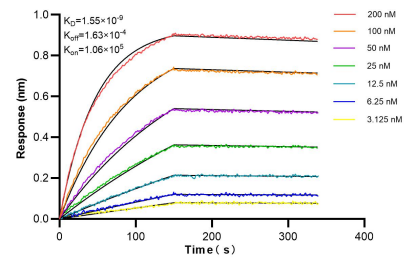
Selected Validation Data



1x10<sup>6</sup> human PBMCs were surface stained with 0.25 ug Anti-Human IL-2RG/CD132 Rabbit Recombinant Antibody (98234-1-RR, Clone: 242020H6), or Rabbit IgG Isotype Control Recombinant Antibody (98136-1-RR, Clone: 240953C9), and PE-Conjugated Goat Anti-Rabbit IgG(H+L). Cells were co-stained with Coralite® Plus 647 Anti-Human CD4. Cells were incubated with FC Receptor Block prior to staining. Cells were not fixed. This data was developed using the same



1x10<sup>6</sup> human PBMCs were surface stained with 0.25 ug Anti-Human IL-2RG/CD132 Rabbit Recombinant Antibody (98234-1-RR, Clone: 242020H6)(red) or Rabbit IgG Isotype Control Recombinant Antibody (98136-1-RR, Clone: 240953C9) (blue), and PE-Conjugated Goat Anti-Rabbit IgG(H+L). Cells were incubated with FC Receptor Block prior to staining. Cells were not fixed. This data was developed using the same antibody clone with 98234-1-PBS in a different storage



Biolayer interferometry (BLI) kinetic assays of 98234-1-RR against Human IL-2RG/CD132 were performed. The affinity constant is 1.55 nM.