

For Research Use Only

# Anti-Human CD300e Rabbit Recombinant Antibody

Catalog Number: 98235-1-RR



## Basic Information

### Catalog Number:

98235-1-RR

### Size:

100ug , 1000 µg/ml

### Source:

Rabbit

### Isotype:

IgG

### GenBank Accession Number:

NM\_181449.2

### GeneID (NCBI):

342510

### UNIPROT ID:

Q496F6

### Full Name:

CD300e molecule

### Calculated MW:

23 kDa

### Purification Method:

Protein A purification

### CloneNo.:

242031C10

## Applications

### Tested Applications:

FC

### Species Specificity:

human

## Background Information

CD300e, also known as immune receptor expressed on myeloid cells 2 (IREM-2), CLM-2, or CMRF35-A5, is one of the CD300 family members which belong to the immunoglobulin (Ig) superfamily (PMID: 15557162; 20039296). CD300e is a type I transmembrane glycoprotein that contains an extracellular region comprising an Ig-like domain, a transmembrane region, and a short cytoplasmic tail (PMID: 15557162; 29358324). It is by monocytes and myeloid dendritic cells and transmits an immune-activating signal by interacting with DNAX-activating protein 12 (DAP12) (PMID: 29358324).

## Storage

### Storage:

Store at 2 - 8°C. Stable for one year after shipment.

### Storage Buffer:

PBS with 0.09% sodium azide, pH 7.3.

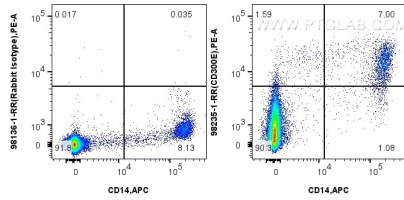
For technical support and original validation data for this product please contact:

T: 1 (888) 4PTGLAB (1-888-478-4522) (toll free in USA), or 1(312) 455-8498 (outside USA)

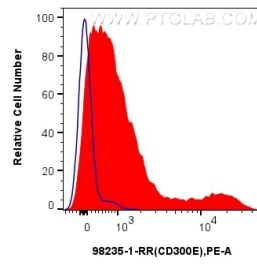
E: [proteintech@ptglab.com](mailto:proteintech@ptglab.com)  
W: [ptglab.com](http://ptglab.com)

This product is exclusively available under Proteintech Group brand and is not available to purchase from any other manufacturer.

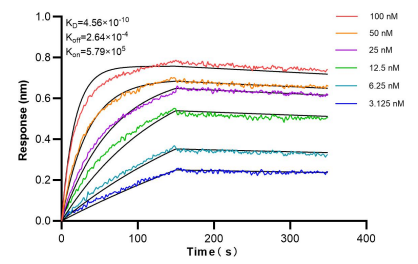
## Selected Validation Data



1x10<sup>6</sup> human PBMCs were surface stained with 0.25 ug Anti-Human CD300e Rabbit Recombinant Antibody (98235-1-RR, Clone: 242031C10) or Rabbit IgG Isotype Control Recombinant Antibody (98136-1-RR, Clone: 240953C9) and PE-Conjugated Goat Anti-Rabbit IgG. Cells were co-stained with APC Anti-Human CD14. Cells were incubated with FC Receptor Block prior to staining. Cells were not fixed



1x10<sup>6</sup> human PBMCs were surface stained with 0.25 ug Anti-Human CD300e Rabbit Recombinant Antibody (98235-1-RR, Clone: 242031C10) (red) or Rabbit IgG Isotype Control Recombinant Antibody (98136-1-RR, Clone: 240953C9) (blue), and PE-Conjugated Goat Anti-Rabbit IgG(H+L). Cells were not fixed.



Biolayer interferometry (BLI) kinetic assays of 98235-1-RR against Human CD300e were performed. The affinity constant is 0.456 nM.