

For Research Use Only

# Anti-Mouse F4/80 Rabbit Recombinant Antibody

Catalog Number: 98236-1-RR

1 Publications



## Basic Information

Catalog Number:

98236-1-RR

Size:

100ug, 1000 µg/ml

Source:

Rabbit

Isotype:

IgG

GenBank Accession Number:

NM\_010130.4

GeneID (NCBI):

13733

UNIPROT ID:

Q61549

Full Name:

EGF-like module containing, mucin-like, hormone receptor-like sequence 1

Calculated MW:

102 kDa

Purification Method:

Protein A purification

CloneNo.:

241959G4

## Applications

Tested Applications:

FC

Cited Applications:

FC

Species Specificity:

mouse

Cited Species:

mouse

## Background Information

Mouse F4/80, also named as EMR1 and Gpf480, is a 160-kDa cell surface glycoprotein which is a member of the EGF TM7 family. The F4/80 molecule is solely expressed on the surface of macrophages and serves as a marker for mature macrophage tissues, including Kupffer cells in liver, splenic red pulp macrophages, brain microglia, gut lamina propria and Langerhans cells in the skin. The function of F4/80 is unclear, but it is speculated to be involved in macrophage adhesion events, cell migration or as a G protein-coupled signaling component of macrophages.

## Notable Publications

Author	Pubmed ID	Journal	Application
Chuan-Yi Zuo	39899130	Inflammation	FC

## Storage

Storage:

Store at 2 - 8°C. Stable for one year after shipment.

Storage Buffer:

PBS with 0.09% sodium azide, pH7.3

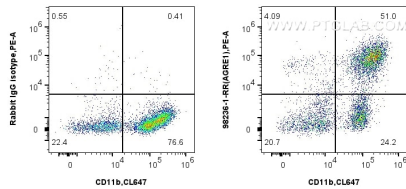
For technical support and original validation data for this product please contact:

T: 1 (888) 4PTGLAB (1-888-478-4522) (toll free in USA), or 1(312) 455-8498 (outside USA)

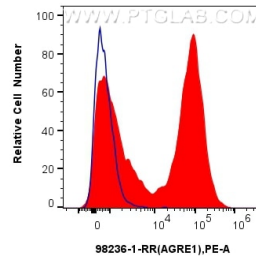
E: [proteintech@ptglab.com](mailto:proteintech@ptglab.com)  
W: [ptglab.com](http://ptglab.com)

This product is exclusively available under Proteintech Group brand and is not available to purchase from any other manufacturer.

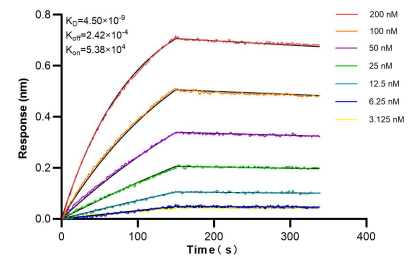
## Selected Validation Data



1x10<sup>6</sup> Balb/c mouse peritoneal macrophages were surface stained with 0.25 ug Anti-Mouse F4/80 Rabbit Recombinant Antibody (98236-1-RR, Clone: 241959G4) or 0.25 ug Rabbit IgG Isotype Control Recombinant Antibody (98136-1-RR, Clone: 240953C9), and PE-Conjugated Goat Anti-Rabbit IgG(H+L). Cells were then stained with CoraLite® Plus 647 Anti-Mouse CD11b. Cells were incubated with FC Receptor Block prior to staining. Cells were not fixed.



1x10<sup>6</sup> Balb/c mouse peritoneal macrophages were surface stained with 0.25 ug Anti-Mouse F4/80 Rabbit Recombinant Antibody (98236-1-RR, Clone: 241959G4) (red) or 0.25 ug Rabbit IgG Isotype Control Recombinant Antibody (98136-1-RR, Clone: 240953C9) (blue), and PE-Conjugated Goat Anti-Rabbit IgG(H+L). Cells were incubated with FC Receptor Block prior to staining. Cells were not fixed.



Biolayer interferometry (BLI) kinetic assays of 98236-1-RR against Mouse F4/80 were performed. The affinity constant is 4.50 nM.