

For Research Use Only

Anti-Human CD46 Rabbit Recombinant Antibody

Catalog Number: 98240-1-RR



Basic Information

Catalog Number: 98240-1-RR	GenBank Accession Number: NM_172351.3	Purification Method: Protein A purification
Size: 100ug, 1000 µg/ml	GeneID (NCBI): 4179	CloneNo.: 241764C9
Source: Rabbit	UNIPROT ID: P15529-11	
Isotype: IgG	Full Name: CD46 molecule, complement regulatory protein	
Immunogen Catalog Number: EG1770	Calculated MW: 42kDa	

Applications

Tested Applications:
FC

Species Specificity:
human

Background Information

CD46, also known as Membrane cofactor protein (MCP) or MIC10, is a ubiquitously expressed type type-I transmembrane glycoprotein that acts as a cofactor for complement factor I to mediate inactivation of C3b and C4b deposited on host cells. CD46 is a receptor for a large number of pathogens, including measles virus and adenovirus (PMID: 20941397). CD46 plays a role in linking innate and adaptive immune responses. It may be involved in the fusion of the spermatozoa with the oocyte during fertilization. Mutations of the CD46 gene have been associated with some diseases including hemolytic uremic syndrome (PMID: 26054645). CD46 is expressed on most cells as four isoforms that are derived via alternative splicing (PMID: 15324743).

Storage

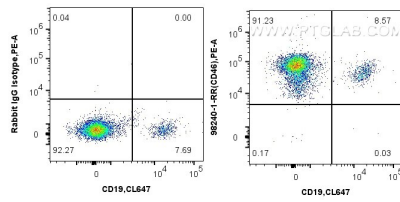
Storage:
Store at 2 - 8°C. Stable for one year after shipment.

Storage Buffer:
PBS with 0.09% sodium azide, pH7.3

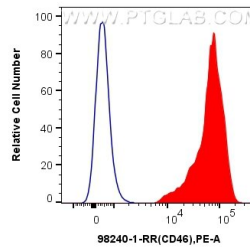
For technical support and original validation data for this product please contact:
T: 1 (888) 4PTGLAB (1-888-478-4522) (toll free in USA), or 1(312) 455-8498 (outside USA)
E: proteintech@ptglab.com
W: ptglab.com

This product is exclusively available under Proteintech Group brand and is not available to purchase from any other manufacturer.

Selected Validation Data



1x10⁶ human PBMCs were surface stained with 0.125 ug Anti-Human CD46 Rabbit Recombinant Antibody (98240-1-RR, Clone: 241764C9) or Rabbit IgG Isotype Control Recombinant Antibody (98136-1-RR, Clone: 240953C9), and PE-Conjugated Goat Anti-Rabbit IgG(H+L). Cells were then stained with CoraLite® Plus 647 Anti-Human CD19. Cells were incubated with FC Receptor Block prior to staining. Cells were not fixed.



1x10⁶ human PBMCs were surface stained with 0.125 ug Anti-Human CD46 Rabbit Recombinant Antibody (98240-1-RR, Clone: 241764C9) (red) or Rabbit IgG Isotype Control Recombinant Antibody (98136-1-RR, Clone: 240953C9) (blue), and PE-Conjugated Goat Anti-Rabbit IgG(H+L). Cells were incubated with FC Receptor Block prior to staining. Cells were not fixed.