

For Research Use Only

Anti-Mouse PD-L2/CD273 Rabbit Recombinant Antibody, PBS Only

Catalog Number: 98241-1-PBS



Basic Information

Catalog Number:

98241-1-PBS

Size:

1mg, 2 mg/ml

Source:

Rabbit

Isotype:

IgG

GenBank Accession Number:

NM_021396.2

GeneID (NCBI):

58205

UNIPROT ID:

Q9WUL5

Full Name:

programmed cell death 1 ligand 2

Calculated MW:

28kDa

Purification Method:

Protein A purification

CloneNo.:

241728D8

Applications

Tested Applications:

FC

Species Specificity:

mouse

Background Information

Programmed cell death ligand 2 (PD-L2, also known as CD273, or B7-DC), is one of the B7 family molecules which are type I transmembrane proteins belonging to the immunoglobulin superfamily. PD-L2 was identified both by its homology to PD-L1 and by analysis of genes differentially expressed in libraries generated from dendritic cells (DC) and activated macrophages (PMID: 14515254). PD-L2 is a second ligand for PD-1, a costimulatory molecule that plays an inhibitory role in regulating T cell activation in the periphery.

Storage

Storage:

Store at -80°C.

Storage Buffer:

PBS Only

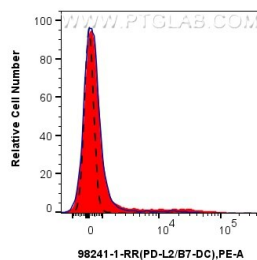
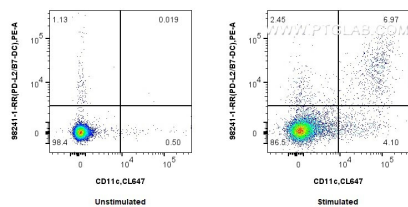
For technical support and original validation data for this product please contact:

T: 1 (888) 4PTGLAB (1-888-478-4522) (toll free in USA), or 1(312) 455-8498 (outside USA)

E: proteintech@ptglab.com
W: ptglab.com

This product is exclusively available under Proteintech Group brand and is not available to purchase from any other manufacturer.

Selected Validation Data



1x10⁶ untreated or GM-CSF treated mouse splenocytes were surface stained with 0.25 ug Anti-Mouse PD-L2/CD273 Rabbit Recombinant Antibody (98241-1-RR, Clone: 241728D8) and PE-Conjugated Goat Anti-Rabbit IgG(H+L). Cells were then stained with APC Anti-Mouse CD11c (N418) (APC-65130, Clone: N418). Cells were not fixed. This data was developed using the same antibody clone with 98241-1-PBS in a different storage buffer formulation.

1x10⁶ GM-CSF treated mouse splenocytes were surface stained with 0.25 ug Anti-Mouse PD-L2/CD273 Rabbit Recombinant Antibody (98241-1-RR, Clone:241728D8) (red) or Rabbit IgG Isotype Control Recombinant Antibody (98136-1-RR, Clone: 240953C9) (blue) and PE-Conjugated Goat Anti-Rabbit IgG(H+L). 1x10⁶ untreated mouse splenocytes were surface stained with 0.25 ug Anti-Mouse PD-L2/CD273 Rabbit Recombinant Antibody (98241-1-RR,

