

For Research Use Only

Anti-Human Jagged1/CD339 Rabbit Recombinant Antibody, PBS Only

Catalog Number: 98243-1-PBS



Basic Information

Catalog Number:

98243-1-PBS

Size:

1mg, 2 mg/ml

Source:

Rabbit

Isotype:

IgG

GenBank Accession Number:

BC098393

GeneID (NCBI):

182

UNIPROT ID:

P78504

Full Name:

jagged 1 (Alagille syndrome)

Calculated MW:

1218 aa, 134 kDa

Purification Method:

Protein A purification

CloneNo.:

241412A6

Applications

Tested Applications:

FC

Species Specificity:

human

Background Information

Jagged1 (JAG1), also known as CD339, is a type I, membrane-anchored, multi-domain protein and a ligand of the Notch receptor (PMID: 15358557). Jagged1 is composed of a relatively small intracellular domain, a transmembrane domain, and a larger extracellular component containing a cysteine-rich region, 16 EGF-like repeats, a DSL domain, and a signal peptide (PMID: 15358557; 26548814). It is widely expressed throughout mammalian development, across many tissues and developmental stages (PMID: 26548814). The Jagged1-NOTCH interaction can trigger the Notch signaling and activate transcription factors that play key roles in cell differentiation and morphogenesis.

Storage

Storage:

Store at -80°C.

Storage Buffer:

PBS Only

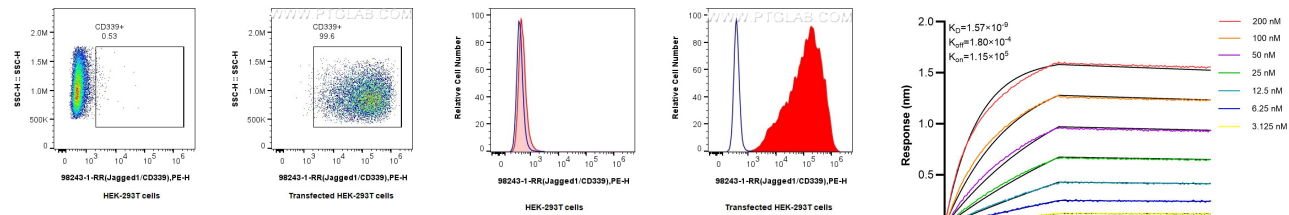
For technical support and original validation data for this product please contact:

T: 1 (888) 4PTGLAB (1-888-478-4522) (toll free in USA), or 1(312) 455-8498 (outside USA)

E: proteintech@ptglab.com
W: ptglab.com

This product is exclusively available under Proteintech Group brand and is not available to purchase from any other manufacturer.

Selected Validation Data



1x10⁶ HEK-293T cells or Jagged1/CD339 transduced HEK-293T cells were surface stained with 0.25 ug Anti-Human Jagged1 Rabbit Recombinant Antibody (98243-1-RR, Clone:241412A6) and PE-Conjugated Goat Anti-Rabbit IgG(H+L). Cells were not fixed. This data was developed using the same antibody clone with 98243-1-PBS in a different storage buffer formulation.

1x10⁶ HEK-293T cells (left) or Jagged1/CD339 transduced HEK-293T cells (right) were surface stained with 0.25 ug Anti-Human Jagged1/CD339 Rabbit Recombinant Antibody (98243-1-RR, Clone:241412A6) (red) or Rabbit IgG Isotype Control Recombinant Antibody (98136-1-RR, Clone: 240953C9) (blue), and PE-Conjugated Goat Anti-Rabbit IgG(H+L). Cells were not fixed. This data was developed using the same antibody clone with 98243-1-PBS in a

Biolayer interferometry (BLI) kinetic assays of 98243-1-RR against Human Jagged1/CD339 were performed. The affinity constant is 1.57 nM.