

For Research Use Only

Anti-Mouse EPCR/CD201 Rabbit Recombinant Antibody

Catalog Number: 98248-1-RR



Basic Information

Catalog Number:

98248-1-RR

Size:

100ug , 1000 µg/ml

Source:

Rabbit

Isotype:

IgG

GenBank Accession Number:

NM_011171.2

GeneID (NCBI):

19124

UNIPROT ID:

Q64695

Full Name:

protein C receptor, endothelial

Calculated MW:

27kDa

Purification Method:

Protein A purification

CloneNo.:

241853A7

Recommended Dilutions:

FC: 0.25 ug per 10⁶ cells in 100 µl suspension

Applications

Tested Applications:

FC

Species Specificity:

mouse

Positive Controls:

FC : bEnd.3 cells,

Background Information

EPCR, also known as CD201, protein C receptor (PROCR), or activated protein C receptor (APC receptor), is a transmembrane glycoprotein. EPCR promotes the activation of protein C, which has anticoagulant and cytoprotective effects. EPCR facilitates the activation of protein C by the thrombin-thrombomodulin complex but also facilitates APC-mediated cytoprotective effects on cells that involve the activation of protease-activated receptors (PAR) 1 and 3 (PMID: 27207424).

Storage

Storage:

Store at 2 - 8°C. Stable for one year after shipment.

Storage Buffer:

PBS with 0.09% sodium azide, pH7.3

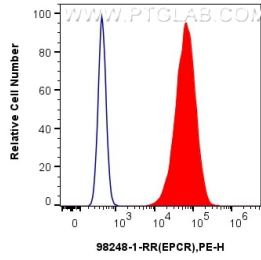
For technical support and original validation data for this product please contact:

T: 1 (888) 4PTGLAB (1-888-478-4522) (toll free in USA), or 1(312) 455-8498 (outside USA)

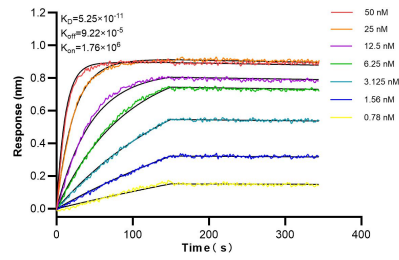
E: proteintech@ptglab.com
W: ptglab.com

This product is exclusively available under Proteintech Group brand and is not available to purchase from any other manufacturer.

Selected Validation Data



1x10⁶ bEnd.3 cells were surface stained with 0.25 ug Anti-Mouse EPCR/CD201 Rabbit Recombinant Antibody (98248-1-RR, Clone: 241853A7) and PE-Conjugated Goat Anti-Rabbit IgG(H+L) (red), or 0.25 ug Rabbit IgG Isotype Control Recombinant Antibody (98136-1-RR, Clone: 240953C9) and PE-Conjugated Goat Anti-Rabbit IgG(H+L) (blue). Cells were not fixed.



Biolayer interferometry (BLI) kinetic assays of 98248-1-RR against Mouse EPCR/CD201 were performed. The affinity constant is 52.5 pM.