

For Research Use Only

Anti-Rat KLRB1/CD161 Rabbit Recombinant Antibody

Catalog Number: 98249-1-RR



Basic Information

Catalog Number:

98249-1-RR

Size:

100ug , 1000 µg/ml

Source:

Rabbit

Isotype:

IgG

GenBank Accession Number:

NM_001010964.1

GeneID (NCBI):

362443

UNIPROT ID:

P27471

Full Name:

killer cell lectin-like receptor
subfamily B, member 1A

Calculated MW:

25 kDa

Purification Method:

Protein A purification

CloneNo.:

241840F3

Applications

Tested Applications:

FC

Species Specificity:

rat

Background Information

CD161, also known as KLRB1 or NKRP1A, is a type II transmembrane C-type lectin-like receptor and is expressed on the cell membrane as disulfide-linked homodimer (PMID: 8077657). It is expressed by the majority of NK cells and subsets of peripheral T cells, including both CD4+ and CD8+ T cells, and is expressed preferentially on adult T cells with a "memory" antigenic phenotype (PMID: 8077657; 22566826). Expression of CD161 correlates with the cytotoxic function of CD16+ NK cells, and ligation of CD161 with its ligand LLT1 inhibits NK cell cytotoxicity and cytokine secretion (PMID: 29686665).

Storage

Storage:

Store at 2 - 8°C. Stable for one year after shipment.

Storage Buffer:

PBS with 0.09% sodium azide, pH 7.3.

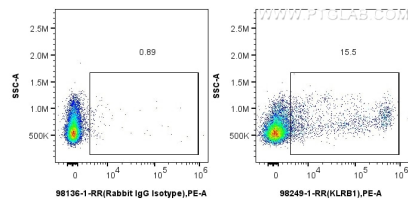
For technical support and original validation data for this product please contact:

T: 1 (888) 4PTGLAB (1-888-478-4522) (toll free
in USA), or 1(312) 455-8498 (outside USA)

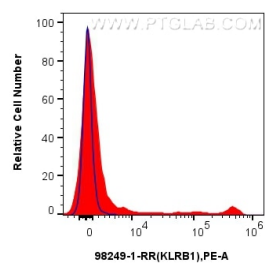
E: proteintech@ptglab.com
W: ptglab.com

This product is exclusively available under Proteintech Group brand and is not available to purchase from any other manufacturer.

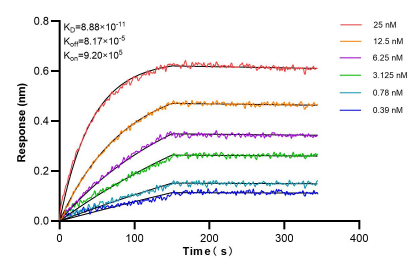
Selected Validation Data



1x10⁶ rat splenocytes were surface stained with 0.25 ug Anti-Rat KLRB1/CD161 Rabbit Recombinant Antibody (98249-1-RR, Clone: 241840F3) or Rabbit IgG Isotype Control Recombinant Antibody (98136-1-RR, Clone: 240953C9), and PE-Conjugated Goat Anti-Rabbit IgG(H+L). Cells were not fixed.



1x10⁶ rat splenocytes were surface stained with 0.25 ug Anti-Rat KLRB1/CD161 Rabbit Recombinant Antibody (98249-1-RR, Clone:241840F3)(red) or Rabbit IgG Isotype Control Recombinant Antibody (98136-1-RR, Clone: 240953C9) (blue) and PE-Conjugated Goat Anti-Rabbit IgG(H+L). Cells were not fixed.



Biolayer interferometry (BLI) kinetic assays of 98249-1-RR against Rat KLRB1/CD161 were performed. The affinity constant is 88.8 pM.