

For Research Use Only

Anti-Rat NKp46/NCR1 Rabbit Recombinant Antibody

Catalog Number: 98250-1-RR



Basic Information

Catalog Number: 98250-1-RR	GenBank Accession Number: NM_057199.1	Purification Method: Protein A purification
Size: 100ug, 1000 µg/ml	GeneID (NCBI): 117547	CloneNo.: 241811E9
Source: Rabbit	UNIPROT ID: Q9Z0H5	
Isotype: IgG	Full Name: natural cytotoxicity triggering receptor 1	
	Calculated MW: 37kDa	

Applications

Tested Applications:
FC

Species Specificity:
rat

Background Information

NKp46, also known as NCR1 or CD335, is an Ig-like superfamily cell surface receptor that is highly conserved in mammals (PMID: 22021440). NKp46 is a type I transmembrane glycoprotein consisting of two extracellular Ig-like domains, a transmembrane domain, and an intracellular tail (PMID: 9730896). It is expressed on NK cells, rare T-cell subsets and a mucosal population of NKp46+ innate lymphoid cells (PMID: 9730896; 22021440). NKp46 is the major triggering receptor involved in the natural cytotoxicity (PMID: 10359120; 10092106; 15356098).

Storage

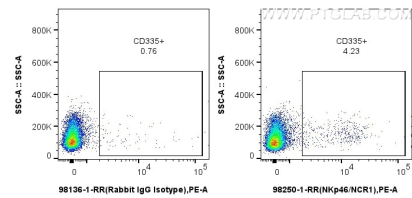
Storage:
Store at 2 - 8°C. Stable for one year after shipment.

Storage Buffer:
PBS with 0.09% sodium azide, pH 7.3.

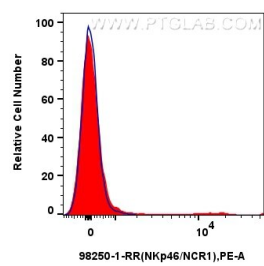
For technical support and original validation data for this product please contact:
T: 1 (888) 4PTGLAB (1-888-478-4522) (toll free in USA), or 1(312) 455-8498 (outside USA)
E: proteintech@ptglab.com
W: ptglab.com

This product is exclusively available under Proteintech Group brand and is not available to purchase from any other manufacturer.

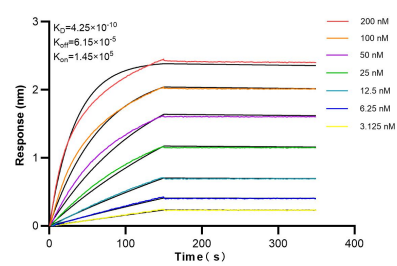
Selected Validation Data



1x10⁶ rat splenocytes were surface stained with 0.25 ug Anti-Rat NKp46/NCR1 Rabbit Recombinant Antibody (98250-1-RR, Clone: 241811E9) or Rabbit IgG Isotype Control Recombinant Antibody (98136-1-RR, Clone: 240953C9), and PE-Conjugated Goat Anti-Rabbit IgG(H+L). Cells were not fixed.



1x10⁶ rat splenocytes were surface stained with 0.25 ug Anti-Rat NKp46/NCR1 Rabbit Recombinant Antibody (98250-1-RR, Clone: 241811E9) (red) or Rabbit IgG Isotype Control Recombinant Antibody (98136-1-RR, Clone: 240953C9) (blue), and PE-Conjugated Goat Anti-Rabbit IgG(H+L). Cells were not fixed.



Biolayer interferometry (BLI) kinetic assays of 98250-1-RR against Rat NKp46/NCR1 were performed. The affinity constant is 0.425 nM.