

For Research Use Only

# Anti-Human EMR2/CD312 Rabbit Recombinant Antibody

Catalog Number: 98260-1-RR



## Basic Information

Catalog Number:

98260-1-RR

Size:

100ug , 1000 µg/ml

Source:

Rabbit

Isotype:

IgG

GenBank Accession Number:

NM\_013447.3

GeneID (NCBI):

30817

UNIPROT ID:

Q9UHX3-1

Full Name:

egf-like module containing, mucin-like, hormone receptor-like 2

Calculated MW:

90 kDa

Purification Method:

Protein A purification

CloneNo.:

242042B11

## Applications

Tested Applications:

FC

Species Specificity:

human

## Background Information

EMR2 (Epidermal Growth Factor-like module-containing Mucin-like Hormone Receptor 2), also known as CD312 or ADGRE2, is a member of the adhesion-GPCR family that contains extracellular EGF-like domains. EMR2 contains a total of five tandem EGF-like domains and expresses similar protein isoforms consisting of various numbers of EGF-like domains as a result of alternative RNA splicing (PMID: 10903844). EMR2 is restricted to myeloid cells including monocytes, macrophages, dendritic cells and granulocytes<sup>28</sup> and its expression is highly regulated during monocyte/macrophage differentiation (PMID: 31969668). The ligation of EMR2 could increase neutrophil adhesion, migration and anti-microbial mediator production and could enhance the systemic inflammation (PMID: 27905560).

## Storage

Storage:

Store at 2 - 8°C. Stable for one year after shipment.

Storage Buffer:

PBS with 0.09% sodium azide, pH 7.3.

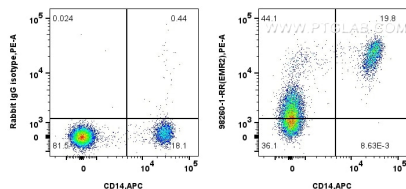
For technical support and original validation data for this product please contact:

T: 1 (888) 4PTGLAB (1-888-478-4522) (toll free in USA), or 1(312) 455-8498 (outside USA)

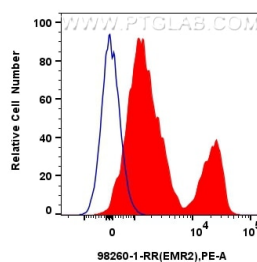
E: [proteintech@ptglab.com](mailto:proteintech@ptglab.com)  
W: [ptglab.com](http://ptglab.com)

This product is exclusively available under Proteintech Group brand and is not available to purchase from any other manufacturer.

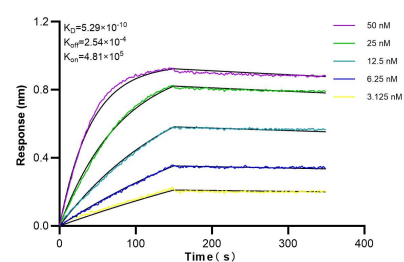
## Selected Validation Data



1x10<sup>6</sup> human PBMCs were surface stained with 0.125 ug Anti-Human EMR2/CD312 Rabbit Recombinant Antibody (98260-1-RR, Clone: 242042B11) or 0.125 ug Rabbit IgG Isotype Control Recombinant Antibody (98136-1-RR, Clone: 240953C9), and PE-Conjugated Goat Anti-Rabbit IgG(H+L). Cells were co-stained with APC Anti-Human CD14. Cells were incubated with FC Receptor Block prior to staining. Cells were not fixed.



1x10<sup>6</sup> human PBMCs were surface stained with 0.125 ug Anti-Human EMR2/CD312 Rabbit Recombinant Antibody (98260-1-RR, Clone: 242042B11)(red) or 0.125 ug Rabbit IgG Isotype Control Recombinant Antibody (98136-1-RR, Clone: 240953C9) (blue), and PE-Conjugated Goat Anti-Rabbit IgG(H+L). Cells were incubated with FC Receptor Block prior to staining. Cells were not fixed.



Bi-layer interferometry (BLI) kinetic assays of 98260-1-RR against Human EMR2/CD312 were performed. The affinity constant is 0.529 nM.