

For Research Use Only

# Anti- GGGGS Linker Rabbit Recombinant Antibody

Catalog Number: 98262-1-RR



## Basic Information

Catalog Number:

98262-1-RR

Size:

100ug , 1000 µg/ml

Source:

Rabbit

Isotype:

IgG

GenBank Accession Number:

GeneID (NCBI):

Full Name:

Purification Method:

Protein A purification

CloneNo.:

242306C8

Recommended Dilutions:

WB 1:1000-1:6000

IHC 1:40000-1:160000

IF/ICC 1:2000-1:8000

## Applications

Tested Applications:

WB, IHC, IF/ICC, FC

Species Specificity:

n/a

**Note-IHC: suggested antigen retrieval with *TE buffer pH 9.0; (\*) Alternatively, antigen retrieval may be performed with citrate buffer pH 6.0***

Positive Controls:

WB : human SCFV Lv-Hv Transfected HEK-293T cells,

IHC : Transfected HEK-293T cells,

IF/ICC : Transfected HEK-293T cells,

## Background Information

As a crucial element in the design of recombinant fusion proteins, linkers play an increasingly vital role in the construction of stable, bioactive fusion proteins (PMID: 23026637). GGGGS linker (G4S linker) is a flexible linker made of 4 glycine repeats followed by a serine amino acid (PMID:3045807). Due to its flexibility and resistance to proteases, GGGGS and its repeats are commonly used when engineering a protein, particularly in the construction of single-chain Fv (ScFv) domains expressed on the surfaces of CAR-T cells (PMID:23581628; 36874404). This antibody was raised against a synthetic peptide (GGGSGGGSGGGGS).

## Storage

Storage:

Store at 2 - 8°C. Stable for one year after shipment.

Storage Buffer:

PBS with 0.09% sodium azide, pH7.3

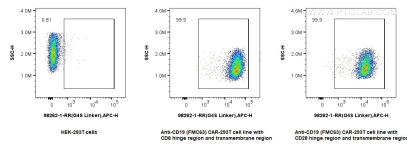
For technical support and original validation data for this product please contact:

T: 1 (888) 4PTGLAB (1-888-478-4522) (toll free in USA), or 1(312) 455-8498 (outside USA)

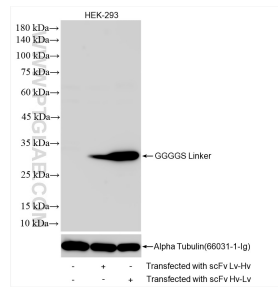
E: [proteintech@ptglab.com](mailto:proteintech@ptglab.com)  
W: [ptglab.com](http://ptglab.com)

**This product is exclusively available under Proteintech Group brand and is not available to purchase from any other manufacturer.**

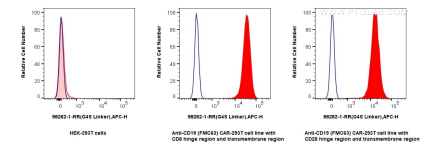
## Selected Validation Data



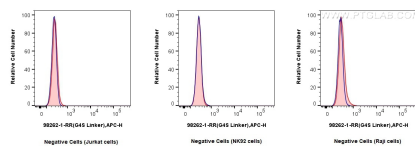
1x10<sup>6</sup> HEK-293T cells or anti-CD19 (FMC63) CAR with CD28 or CD8 hinge region and transmembrane region transfected HEK-293T cells were surface stained with 0.25 ug Anti G4S Linker Rabbit RecAb (98262-1-RR, Clone:242306C8) and Multi-rAb CoraLite Plus 647-Goat Anti-Rabbit Recombinant Secondary Antibody (H+L) (RGAR005). Cells were not fixed.



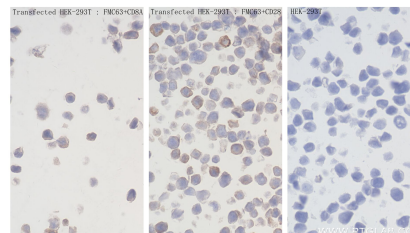
Various lysates were subjected to SDS PAGE followed by western blot with 98262-1-RR (GGGGS Linker antibody) at dilution of 1:3000 incubated at room temperature for 1.5 hours.



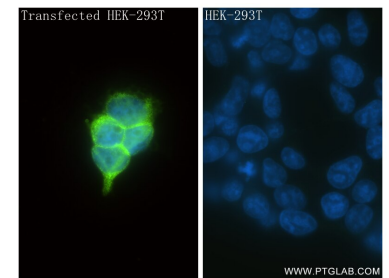
1x10<sup>6</sup> HEK-293T cells or anti-CD19 (FMC63) CAR with CD28 or CD8 hinge region and transmembrane region transfected HEK-293T cells were surface stained with 0.25 ug Anti G4S Linker Rabbit RecAb (98262-1-RR, Clone:242306C8) and Multi-rAb CoraLite Plus 647-Goat Anti-Rabbit Recombinant Secondary Antibody (H+L) (RGAR005) (red), or Rabbit IgG Isotype Control RecAb (98136-1-RR, Clone: 240953C9) (blue). Cells were not fixed



1x10<sup>6</sup> Jurkat cells or NK92 cells or Raji cells were surface stained with 0.25 ug Anti G4S Linker Rabbit RecAb (98262-1-RR, Clone: 242306C8) (red) or Rabbit IgG Isotype Control RecAb (98136-1-RR, Clone: 240953C9) (blue), and Multi-rAb CoraLite Plus 647-Goat Anti-Rabbit Recombinant Secondary Antibody (H+L) (RGAR005). Cells were not fixed



Immunohistochemical analysis of paraffin-embedded Transfected HEK-293T cells slide using 98262-1-RR (GGGGS Linker antibody) at dilution of 1:80000 (under 40x lens).



Immunofluorescent analysis of (-20°C Ethanol) fixed Transfected HEK-293T cells using GGGGS Linker antibody (98262-1-RR, Clone: 242306C8) at dilution of 1:4000 and CoraLite® 488-Conjugated Goat Anti-Rabbit IgG(H+L) (SA00013-2).