

For Research Use Only

Anti-Human Siglec-9 Rabbit Recombinant Antibody

Catalog Number: 98264-6-RR



Basic Information

Catalog Number: 98264-6-RR	GenBank Accession Number: NM_014441.3	Purification Method: Protein A purification
Size: 100ug , 1000 µg/ml	GeneID (NCBI): 27180	CloneNo.: 241799C10
Source: Rabbit	UNIPROT ID: Q9Y336-1	
Isotype: IgG	Full Name: sialic acid binding Ig-like lectin 9	
	Calculated MW: 50 kDa	

Applications

Tested Applications:
FC

Species Specificity:
human

Background Information

Sialic acid binding Ig-like lectin 9 (Siglec-9), also known as CD329, is a member of the Siglec family of glycan-recognition proteins. Siglec-9 is a type-I transmembrane protein consisting of an N-terminal extracellular region that contains an N-terminal V-set domain and two C2-set domains, a transmembrane region, and an intracellular domain with an immunoreceptor tyrosine-based inhibitory motif (ITIM) and an ITIM-like motif (PMID: 10801862). It is expressed quite broadly among human blood leukocytes, including monocytes, neutrophils, B cells, NK cells, and minor subsets of T cells (PMID: 32322597). Siglec-9 functions as an inhibitory immune checkpoint and can be targeted to enhance therapeutic antitumor immunity (PMID: 34155121; 37460871).

Storage

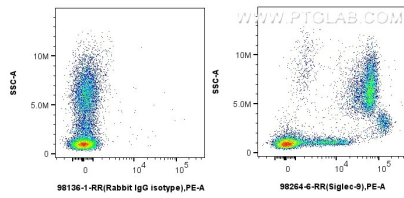
Storage:
Store at 2 - 8°C. Stable for one year after shipment.

Storage Buffer:
PBS with 0.09% sodium azide, pH 7.3.

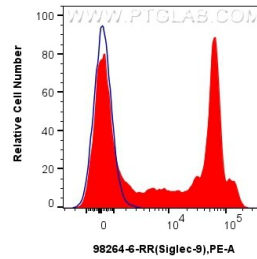
For technical support and original validation data for this product please contact:
T: 1 (888) 4PTGLAB (1-888-478-4522) (toll free in USA), or 1(312) 455-8498 (outside USA)
E: proteintech@ptglab.com
W: ptglab.com

This product is exclusively available under Proteintech Group brand and is not available to purchase from any other manufacturer.

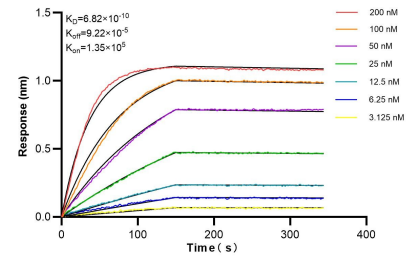
Selected Validation Data



1x10⁶ human peripheral blood leukocytes were surface stained with 0.125 ug Anti-Human Siglec-9 Rabbit RecAb (98264-6-RR, Clone: 241799C10) or Rabbit IgG Isotype Control RecAb (98136-1-RR, Clone: 240953C9), and PE-conjugated Goat Anti-Rabbit IgG. Cells were incubated with FC Receptor Block prior to staining. Cells were not fixed.



1x10⁶ human peripheral blood leukocytes were surface stained with 0.125 ug Anti-Human Siglec-9 Rabbit RecAb (98264-6-RR, Clone: 241799C10) (red) or Rabbit IgG Isotype Control RecAb (98136-1-RR, Clone: 240953C9) (blue), and PE-conjugated Goat Anti-Rabbit IgG. Cells were incubated with FC Receptor Block prior to staining. Cells were not fixed.



Biolayer interferometry (BLI) kinetic assays of 98264-6-RR against Human Siglec-9 were performed. The affinity constant is 0.682 nM.