

For Research Use Only

# Anti-Human CXCL10/IP-10 Rabbit Recombinant Antibody

Catalog Number:98265-4-RR



## Basic Information

Catalog Number:

98265-4-RR

Size:

100ug , 1000 µg/ml

Source:

Rabbit

Isotype:

IgG

Immunogen Catalog Number:

EG2489

GenBank Accession Number:

BC010954

GeneID (NCBI):

3627

UNIPROT ID:

P02778

Full Name:

chemokine (C-X-C motif) ligand 10

Calculated MW:

11 kDa

Purification Method:

Protein A purification

CloneNo.:

250120D9

Recommended Dilutions:

FC (Intra): 0.25 ug per 10<sup>6</sup> cells in a 100 µl suspension

## Applications

Tested Applications:

FC (Intra)

Species Specificity:

human

Positive Controls:

FC (Intra): IFN gamma and Brefeldin A treated human PBMCs,

## Background Information

CXCL10 (also known as IP-10) is a member of the CXC chemokine family which binds to the CXCR3 receptor to exert its biological effects. CXCL10 is a 12-kDa protein and constitutes two internal disulfide cross bridges. The predicted signal peptidase cleavage generates a 10-kDa secreted polypeptide with four conserved cysteine residues in the N-terminal. The CXCL10 gene localizes on chromosome 4 at band q21, a locus associated with an acute monocytic/B-lymphocyte lineage leukemia exhibiting translocation of t (4; 11) (q21; q23). CXCL10 mediates leukocyte trafficking, adaptive immunity, inflammation, haematopoiesis and angiogenesis. Under proinflammatory conditions CXCL10 is secreted from a variety of cells, such as leukocytes, activated neutrophils, eosinophils, monocytes, epithelial cells, endothelial cells, stromal cells (fibroblasts) and keratinocytes in response to IFN-γ.

## Storage

Storage:

Store at 2 - 8°C. Stable for one year after shipment.

Storage Buffer:

PBS with 0.09% sodium azide, pH7.3

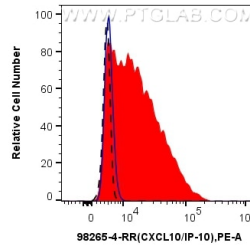
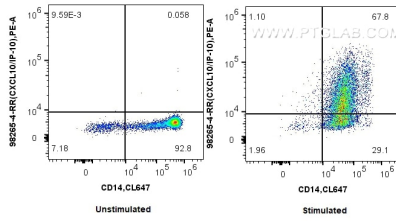
For technical support and original validation data for this product please contact:

T: 1 (888) 4PTGLAB (1-888-478-4522) (toll free in USA), or 1(312) 455-8498 (outside USA)

E: [proteintech@ptglab.com](mailto:proteintech@ptglab.com)  
W: [ptglab.com](http://ptglab.com)

**This product is exclusively available under Proteintech Group brand and is not available to purchase from any other manufacturer.**

## Selected Validation Data



$1 \times 10^6$  untreated or IFN gamma and brefeldin A treated human PBMCs were intracellularly stained with 0.25 ug Anti-Human CXCL10/IP-10 Rabbit RecAb (98265-4-RR, Clone:250120D9) and PE-Conjugated Goat Anti-Rabbit IgG(H+L). Cells were then stained with CoraLite® Plus 647 Anti-Human CD14. Cells were fixed with 4% PFA and permeabilized with Flow Cytometry Perm Buffer.

$1 \times 10^6$  IFN gamma and Brefeldin A treated human PBMCs were intracellularly stained with 0.25 ug Anti-Human CXCL10/IP-10 Rabbit RecAb (98265-4-RR, Clone:250120D9) (red) or Rabbit IgG Isotype Control RecAb (98136-1-RR, Clone: 240953C9) (blue), and PE-Conjugated Goat Anti-Rabbit IgG(H+L).  $1 \times 10^6$  untreated PBMCs were intracellularly stained with 0.25 ug Anti-Human CXCL10/IP-10 Rabbit RecAb (98265-4-RR, Clone: 250120D9) (black, dashed) and

