

For Research Use Only

Anti-Human CD107a / LAMP1 Rabbit Recombinant Antibody

Catalog Number: 98266-1-RR



Basic Information

Catalog Number: 98266-1-RR	GenBank Accession Number: NM_005561.4	Purification Method: Protein A purification
Size: 100ug , 1000 µg/ml	GeneID (NCBI): 3916	CloneNo.: 242116F1
Source: Rabbit	ENSEMBL Gene ID: ENSG00000185896	
Isotype: IgG	UNIPROT ID: P11279-1	
Immunogen Catalog Number: EG2611	Full Name: lysosomal-associated membrane protein 1	
	Calculated MW: 45 kDa	

Applications

Tested Applications:
FC (Intra)

Species Specificity:
human

Background Information

LAMP1 (CD107a) is a heavily glycosylated membrane protein enriched in the lysosomal membrane. LAMP1 is extensively glycosylated with asparagine-linked oligosaccharides which protect it from intracellular proteolysis (PMID: 10521503). Although LAMP1 is expressed largely in the endosome-lysosomal membrane of cells, it is also found on the plasma membrane (PMID: 16168398). Elevated LAMP1 expression at the cell surface has also been detected during platelet and granulocytic cell activation, as well as in some tumor cells (PMID: 29085473). LAMP1 functions to provide selectins with carbohydrate ligands. This protein has also been shown to be a marker of degranulation on lymphocytes such as CD8+ and NK cells and may also play a role in tumor cell differentiation and metastasis (PMID: 18835598; 29085473; 9426697).

Storage

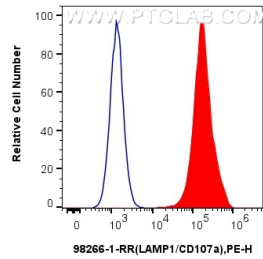
Storage:
Store at 2 - 8°C. Stable for one year after shipment.

Storage Buffer:
PBS with 0.09% sodium azide, pH7.3

For technical support and original validation data for this product please contact:
T: 1 (888) 4PTGLAB (1-888-478-4522) (toll free in USA), or 1(312) 455-8498 (outside USA)
E: proteintech@ptglab.com
W: ptglab.com

This product is exclusively available under Proteintech Group brand and is not available to purchase from any other manufacturer.

Selected Validation Data



1x10⁶ Jurkat cells were intracellularly stained with 0.25 ug Anti-Human CD107a/LAMP1 Rabbit Recombinant Antibody (98266-1-RR, Clone: 242116F1) (red) or 0.25 ug Rabbit IgG Isotype Control Recombinant Antibody (98136-1-RR, Clone: 240953C9) (blue), and PE-Conjugated Goat Anti-Rabbit IgG(H+L). Cells were fixed with 4% PFA and permeabilized with Flow Cytometry Perm Buffer (PF00011-C).