

For Research Use Only

# Anti-Human CD107a / LAMP1 Rabbit Recombinant Antibody, PBS Only

Catalog Number: 98266-2-PBS



## Basic Information

Catalog Number:	98266-2-PBS	GenBank Accession Number:	NM_005561.4	Purification Method:	Protein A purification
Size:	1mg, 2 mg/ml	GeneID (NCBI):	3916	CloneNo.:	242116E8
Source:	Rabbit	ENSEMBL Gene ID:	ENSG00000185896		
Isotype:	IgG	UNIPROT ID:	P11279-1		
Immunogen Catalog Number:	EG2611	Full Name:	lysosomal-associated membrane protein 1		
		Calculated MW:	45 kDa		

## Applications

Tested Applications:  
IF/ICC, FC (Intra)  
Species Specificity:  
human

## Background Information

LAMP1 (CD107a) is a heavily glycosylated membrane protein enriched in the lysosomal membrane. LAMP1 is extensively glycosylated with asparagine-linked oligosaccharides which protect it from intracellular proteolysis (PMID: 10521503). Although LAMP1 is expressed largely in the endosome-lysosomal membrane of cells, it is also found on the plasma membrane (PMID: 16168398). Elevated LAMP1 expression at the cell surface has also been detected during platelet and granulocytic cell activation, as well as in some tumor cells (PMID: 29085473). LAMP1 functions to provide selectins with carbohydrate ligands. This protein has also been shown to be a marker of degranulation on lymphocytes such as CD8+ and NK cells and may also play a role in tumor cell differentiation and metastasis (PMID: 18835598; 29085473; 9426697).

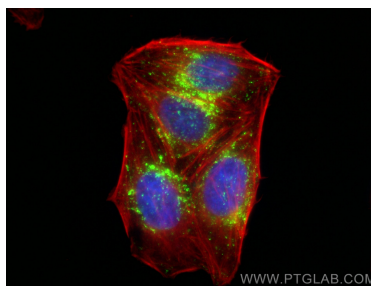
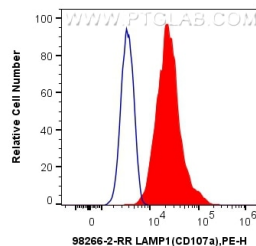
## Storage

Storage:  
Store at -80°C.  
Storage Buffer:  
PBS only, pH7.3

For technical support and original validation data for this product please contact:  
T: 1 (888) 4PTGLAB (1-888-478-4522) (toll free in USA), or 1(312) 455-8498 (outside USA)  
E: [proteintech@ptglab.com](mailto:proteintech@ptglab.com)  
W: [ptglab.com](http://ptglab.com)

This product is exclusively available under Proteintech Group brand and is not available to purchase from any other manufacturer.

## Selected Validation Data



1x10<sup>6</sup> Jurkat cells were intracellularly stained with 0.25 ug Anti-Human CD107a / LAMP1 Rabbit RecAb (98266-2-RR, Clone: 242116E8) and PE-Conjugated Goat Anti-Rabbit IgG(H+L) (red), or 0.25 ug Rabbit IgG Isotype Control RecAb (98136-1-RR, Clone: 240953C9) and PE-Conjugated Goat Anti-Rabbit IgG(H+L) (blue). Cells were fixed with 4% PFA and permeabilized with Flow Cytometry Perm Buffer (PF00011-C). This data was developed using the same



Immunofluorescent analysis of (4% PFA) fixed HepG2 cells using LAMP1 antibody (98266-2-RR, Clone: 242116E8) at dilution of 1:500 and CoraLite® 488-Conjugated Goat Anti-Rabbit IgG(H+L) (SA00013-2), CL594-Phalloidin (red). This data was developed using the same antibody clone with 98266-2-PBS in a different storage buffer formulation.