

For Research Use Only

Anti-Human CD107a / LAMP1 Rabbit Recombinant Antibody

Catalog Number: 98266-2-RR



Basic Information

Catalog Number: 98266-2-RR	GenBank Accession Number: NM_005561.4	Purification Method: Protein A purification
Size: 100ug, 1000 µg/ml	GeneID (NCBI): 3916	CloneNo.: 242116E8
Source: Rabbit	ENSEMBL Gene ID: ENSG00000185896	Recommended Dilutions: IF/ICC 1:250-1:1000
Isotype: IgG	UNIPROT ID: P11279-1	
Immunogen Catalog Number: EG2611	Full Name: lysosomal-associated membrane protein 1	
	Calculated MW: 45 kDa	

Applications

Tested Applications: IF/ICC, FC (Intra)	Positive Controls: IF/ICC : HepG2 cells,
Species Specificity: human	

Background Information

LAMP1 (CD107a) is a heavily glycosylated membrane protein enriched in the lysosomal membrane. LAMP1 is extensively glycosylated with asparagine-linked oligosaccharides which protect it from intracellular proteolysis (PMID: 10521503). Although LAMP1 is expressed largely in the endosome-lysosomal membrane of cells, it is also found on the plasma membrane (PMID: 16168398). Elevated LAMP1 expression at the cell surface has also been detected during platelet and granulocytic cell activation, as well as in some tumor cells (PMID: 29085473). LAMP1 functions to provide selectins with carbohydrate ligands. This protein has also been shown to be a marker of degranulation on lymphocytes such as CD8+ and NK cells and may also play a role in tumor cell differentiation and metastasis (PMID: 18835598; 29085473; 9426697).

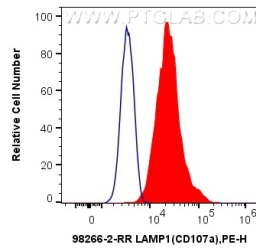
Storage

Storage:
Store at 2 - 8°C. Stable for one year after shipment.
Storage Buffer:
PBS with 0.09% sodium azide, pH7.3

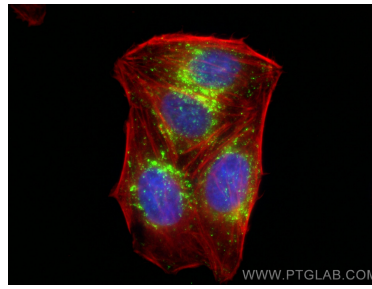
For technical support and original validation data for this product please contact:
T: 1 (888) 4PTGLAB (1-888-478-4522) (toll free in USA), or 1(312) 455-8498 (outside USA)
E: proteintech@ptglab.com
W: ptglab.com

This product is exclusively available under Proteintech Group brand and is not available to purchase from any other manufacturer.

Selected Validation Data



1x10⁶ Jurkat cells were intracellularly stained with 0.25 ug Anti-Human CD107a / LAMP1 Rabbit RecAb (98266-2-RR, Clone: 242116E8) and PE-Conjugated Goat Anti-Rabbit IgG(H+L) (red), or 0.25 ug Rabbit IgG Isotype Control RecAb (98136-1-RR, Clone: 240953C9) and PE-Conjugated Goat Anti-Rabbit IgG(H+L) (blue). Cells were fixed with 4% PFA and permeabilized with Flow Cytometry Perm Buffer (PF00011-C).



Immunofluorescent analysis of (4% PFA) fixed HepG2 cells using LAMP1 antibody (98266-2-RR, Clone: 242116E8) at dilution of 1:500 and CoraLite® 488-Conjugated Goat Anti-Rabbit IgG(H+L) (SA00013-2), CL594-Phalloidin (red).