

For Research Use Only

Anti-Mouse Glycophorin A/CD235a Rabbit Recombinant Antibody, PBS Only

Catalog Number: 98269-1-PBS



Basic Information

Catalog Number:

98269-1-PBS

Size:

1mg, 2 mg/ml

Source:

Rabbit

Isotype:

IgG

GenBank Accession Number:

NM_010369.3

GeneID (NCBI):

14934

UNIPROT ID:

P14220

Full Name:

glycophorin A

Calculated MW:

18kDa

Purification Method:

Protein A purification

CloneNo.:

242129D10

Applications

Tested Applications:

FC

Species Specificity:

mouse

Background Information

Glycophorin A (GYPA), also known as CD235a, is the major transmembrane sialoglycoprotein in erythrocytes. It is a dimeric type I transmembrane protein carrying 15 closely clustered O-linked tetrasaccharides capped with sialic acid/N-acetylneuraminic acid (Neu5Ac). This 36 kDa protein represents the major sialoglycoprotein of the red blood cell membrane displaying about one million copies per cell. (PMID: 9490702)

Storage

Storage:

Store at -80°C.

Storage Buffer:

PBS Only

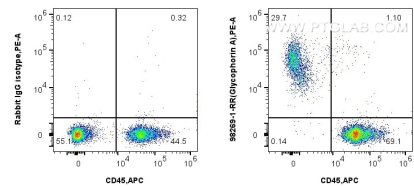
For technical support and original validation data for this product please contact:

T: 1 (888) 4PTGLAB (1-888-478-4522) (toll free
in USA), or 1(312) 455-8498 (outside USA)

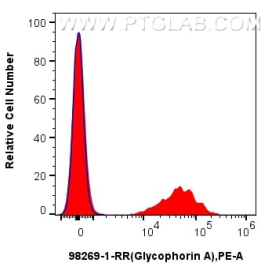
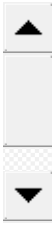
E: proteintech@ptglab.com
W: ptglab.com

This product is exclusively available under Proteintech Group brand and is not available to purchase from any other manufacturer.

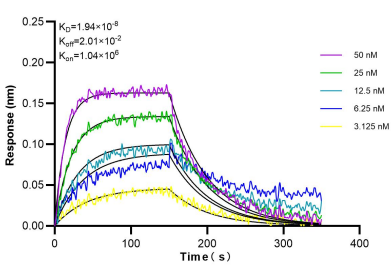
Selected Validation Data



1x10⁶ mouse bone marrow cells were surface stained with 0.25 ug Anti-Mouse Glycophorin A/CD235a Rabbit Recombinant Antibody (98269-1-RR, Clone: 242129D10) or 0.25 ug Rabbit IgG Isotype Control Recombinant Antibody (98136-1-RR, Clone: 240953C9), and PE-Conjugated Goat Anti-Rabbit IgG(H+L). Cells were then stained with APC Anti-Mouse CD45 (30-F11) (APC-65087, Clone: 30-F11). Cells were not fixed. This data was developed using the same



1x10⁶ mouse bone marrow cells were surface stained with 0.25 ug Anti-Mouse Glycophorin A/CD235a Rabbit Recombinant Antibody (98269-1-RR, Clone: 242129D10) (red) or 0.25 ug Rabbit IgG Isotype Control Recombinant Antibody (98136-1-RR, Clone: 240953C9) (blue), and PE-Conjugated Goat Anti-Rabbit IgG(H+L). Cells were not fixed. This data was developed using the same antibody clone with 98269-1-PBS in a different storage buffer formulation.



Biolayer interferometry (BLI) kinetic assays of 98269-1-RR against Mouse Glycophorin A/CD235a were performed. The affinity constant is 19.4 nM.