

For Research Use Only

Anti-Human IL-17RA/CD217 Rabbit Recombinant Antibody, PBS Only

Catalog Number: 98271-1-PBS



Basic Information

Catalog Number:

98271-1-PBS

Size:

1mg, 2 mg/ml

Source:

Rabbit

Isotype:

IgG

GenBank Accession Number:

BC011624

GeneID (NCBI):

23765

UNIPROT ID:

Q96F46

Full Name:

interleukin 17 receptor A

Calculated MW:

866 aa, 96 kDa

Purification Method:

Protein A purification

CloneNo.:

241891G7

Applications

Tested Applications:

FC

Species Specificity:

human

Storage

Storage:

Store at -80°C.

Storage Buffer:

PBS Only

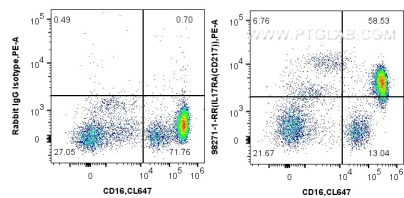
For technical support and original validation data for this product please contact:

T: 1 (888) 4PTGLAB (1-888-478-4522) (toll free in USA), or 1(312) 455-8498 (outside USA)

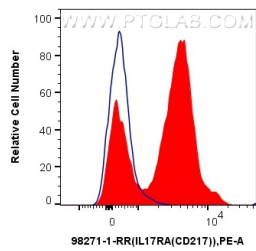
E: proteintech@ptglab.com
W: ptglab.com

This product is exclusively available under Proteintech Group brand and is not available to purchase from any other manufacturer.

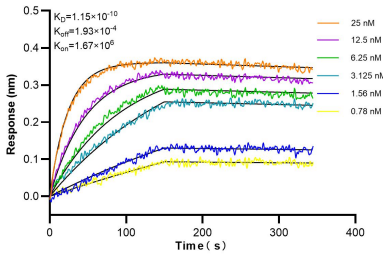
Selected Validation Data



1x10⁶ human peripheral blood leukocytes were surface stained with 0.25 ug Anti-Human IL-17RA/CD217 Rabbit Recombinant Antibody (98271-1-RR, Clone: 241891G7) or Rabbit IgG Isotype Control Recombinant Antibody (98136-1-RR, Clone: 240953C9), and PE-Conjugated Goat Anti-Rabbit IgG(H+L). Cells were co-stained with CoraLite® Plus 647 Anti-Human CD16 (3G8). Cells were incubated with FC Receptor Block prior to staining. Cells were not fixed. This



1x10⁶ human peripheral blood leukocytes were surface stained with 0.25 ug Anti-Human IL-17RA/CD217 Rabbit Recombinant Antibody (98271-1-RR, Clone: 241891G7) (red) or Rabbit IgG Isotype Control Recombinant Antibody (98136-1-RR, Clone: 240953C9) (blue), and PE-Conjugated Goat Anti-Rabbit IgG(H+L). Cells were incubated with FC Receptor Block prior to staining. Cells were not fixed. This data was developed using the same antibody clone



Biolayer interferometry (BLI) kinetic assays of 98271-1-RR against Human IL-17RA/CD217 were performed. The affinity constant is 0.115 nM.