

For Research Use Only

Anti-Mouse CD229/SLAMF3 Rabbit Recombinant Antibody, PBS Only

Catalog Number: 98274-1-PBS



Basic Information

Catalog Number:

98274-1-PBS

Size:

1mg, 2 mg/ml

Source:

Rabbit

Isotype:

IgG

GenBank Accession Number:

NM_001277968.1

GeneID (NCBI):

17085

UNIPROT ID:

Q01965

Full Name:

Lymphocyte antigen 9

Calculated MW:

73 kDa

Purification Method:

Protein A purification

CloneNo.:

242312D12

Applications

Tested Applications:

FC

Species Specificity:

mouse

Background Information

Signaling lymphocytic activation molecule 3 (SLAMF3), also known as CD229 or Ly9, is a type I transmembrane glycoprotein that belongs to the SLAM family receptors (PMID: 10970093; 15905546). It is composed of an extracellular region, which consists of four Ig-like domains, a transmembrane region, and a cytoplasmic tail, which includes two immunoreceptor tyrosine-based signaling motifs (ITSMs) and other tyrosine residues that act as binding sites for the SH2 structural domains (PMID: 8537117; 11369645; 38626547). SLAMF3 is mainly expressed in immune cells, such as T, B, and natural killer cells, and it is involved in the fundamental activation and suppression of these immune cells, as well as the regulation of complex immune networks (PMID: 38626547).

Storage

Storage:

Store at -80°C.

Storage Buffer:

PBS Only

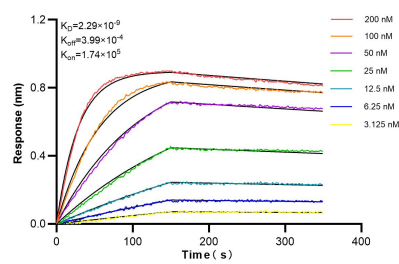
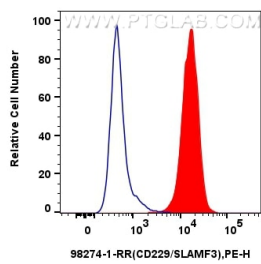
For technical support and original validation data for this product please contact:

T: 1 (888) 4PTGLAB (1-888-478-4522) (toll free in USA), or 1(312) 455-8498 (outside USA)

E: proteintech@ptglab.com
W: ptglab.com

This product is exclusively available under Proteintech Group brand and is not available to purchase from any other manufacturer.

Selected Validation Data



1x10⁶ mouse splenocytes were surface stained with 0.25 ug Anti-Mouse CD229/SLAMF3 Rabbit Recombinant Antibody (98274-1-RR, Clone: 242312D12) and PE-Conjugated Goat Anti-Rabbit IgG(H+L) (red), or 0.25 ug Rabbit IgG Isotype Control Recombinant Antibody (98136-1-RR, Clone: 240953C9) and PE-Conjugated Goat Anti-Rabbit IgG(H+L) (blue). Cells were not fixed. This data was developed using the same antibody clone with 98274-1-PBS in a



Biolayer interferometry (BLI) kinetic assays of 98274-1-RR against Mouse CD229/SLAMF3 were performed. The affinity constant is 2.29 nM.