

For Research Use Only

Anti-Mouse gp130/IL6ST Rabbit Recombinant Antibody, PBS Only

Catalog Number: 98275-1-PBS



Basic Information

Catalog Number:

98275-1-PBS

Size:

1mg, 2 mg/ml

Source:

Rabbit

Isotype:

IgG

GenBank Accession Number:

NM_010560.3

GeneID (NCBI):

16195

UNIPROT ID:

Q00560

Full Name:

interleukin 6 signal transducer

Calculated MW:

102kDa, 917aa

Purification Method:

Protein A purification

CloneNo.:

242236B6

Applications

Tested Applications:

FC

Species Specificity:

mouse

Background Information

Glycoprotein 130 (gp130, also known as IL6ST, CD130 or IL6-beta) is a ubiquitously expressed, signal-transducing receptor that serves as the signal transduction unit for IL-6 family of cytokines, including IL-6, IL-11, IL-27, leukemia inhibitory factor (LIF), OSM, ciliary neurotrophic factor (CNTF), cardiotrophin 1 (CT-1), and cardiotrophin-like cytokine (CLC) (PMID: 9143707; 20610800). These cytokines signal through the gp130/Jak/STAT pathway (PMID: 9716487). The binding of IL-6 to IL-6R induces gp130 homodimerization and formation of a high-affinity receptor complex, which activates Jaks. That causes phosphorylation of gp130 tyrosine residues which in turn activates STAT3. gp130 is a type I transmembrane protein, and can also exist as a soluble form (sgp130). sgp130 binds to sIL-6R/IL-6 complexes and prevents their interactions with membrane-anchored gp130 on target cells (PMID: 9815830).

Storage

Storage:

Store at -80°C.

Storage Buffer:

PBS Only

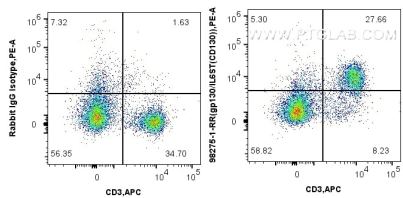
For technical support and original validation data for this product please contact:

T: 1 (888) 4PTGLAB (1-888-478-4522) (toll free in USA), or 1(312) 455-8498 (outside USA)

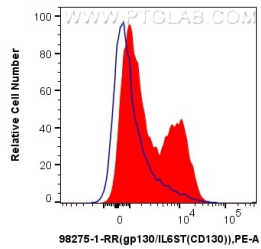
E: proteintech@ptglab.com
W: ptglab.com

This product is exclusively available under Proteintech Group brand and is not available to purchase from any other manufacturer.

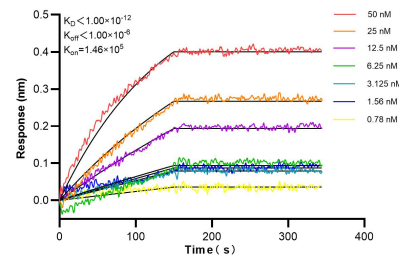
Selected Validation Data



1x10⁶ C57BL/6 mouse splenocytes were surface stained with 0.25 ug Anti-Mouse gp130/IL6ST Rabbit Recombinant Antibody (98275-1-RR, Clone: 242236B6) or Rabbit IgG Isotype Control Recombinant Antibody (98136-1-RR, Clone: 240953C9), and PE-Conjugated Goat Anti-Rabbit IgG(H+L). Cells were co-stained with APC Anti-Mouse CD3. Cells were not fixed. This data was developed using the same antibody clone with 98275-1-PBS in a different storage



1x10⁶ C57BL/6 mouse splenocytes were surface stained with 0.25 ug Anti-Mouse gp130/IL6ST Rabbit Recombinant Antibody (98275-1-RR, Clone: 242236B6) (red) or Rabbit IgG Isotype Control Recombinant Antibody (98136-1-RR, Clone: 240953C9) (blue), and PE-Conjugated Goat Anti-Rabbit IgG(H+L). Cells were not fixed. This data was developed using the same antibody clone with 98275-1-PBS in a different storage buffer formulation.



Biolayer interferometry (BLI) kinetic assays of 98275-1-RR against Mouse gp130/IL6ST were performed. The affinity constant is below 1 pM.