

For Research Use Only

# Anti-Human PSMA/GCPII Rabbit Recombinant Antibody

Catalog Number: 98279-1-RR



## Basic Information

Catalog Number:

98279-1-RR

Size:

100ug , 1000 µg/ml

Source:

Rabbit

Isotype:

IgG

GenBank Accession Number:

NM\_004476.3

GeneID (NCBI):

2346

UNIPROT ID:

Q04609

Full Name:

folate hydrolase (prostate-specific membrane antigen) 1

Calculated MW:

84KD

Purification Method:

Protein A purification

CloneNo.:

242026E6

## Applications

Tested Applications:

FC

Species Specificity:

human

## Background Information

PSMA (Prostate-specific membrane antigen) is also named as FOLH1, FOLH, NAALAD1, PSM and belongs to the peptidase M28 family. PSMA is a 100-120 kDa integral transmembrane glycoprotein, considered to be a highly specific marker of the prostate gland, and has successfully been used as a marker of circulating prostatic epithelial cells (PMID:10074909; 15680901). It is involved in conversion of the major neurotransmitter (NAAG) to NAA and free glutamate. It has 8 isoforms produced by alternative splicing.

## Storage

Storage:

Store at 2 - 8°C. Stable for one year after shipment.

Storage Buffer:

PBS with 0.09% sodium azide

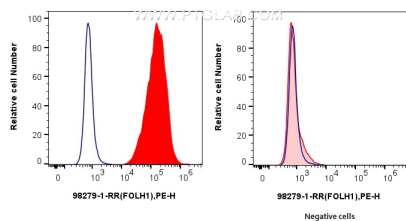
For technical support and original validation data for this product please contact:

T: 1 (888) 4PTGLAB (1-888-478-4522) (toll free in USA), or 1(312) 455-8498 (outside USA)

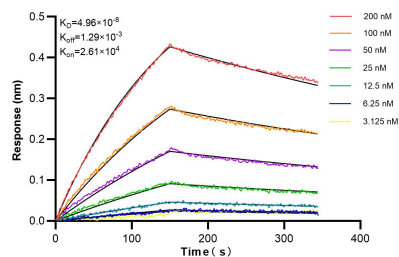
E: [proteintech@ptglab.com](mailto:proteintech@ptglab.com)  
W: [ptglab.com](http://ptglab.com)

This product is exclusively available under Proteintech Group brand and is not available to purchase from any other manufacturer.

## Selected Validation Data



1x10<sup>6</sup> LNCaP cells (left) or HeLa (right) were surface stained with 0.25 ug Anti-Human FOLH1 Rabbit RecAb (98279-1-RR, Clone: 242026E6) (red), or Rabbit IgG Isotype Control RecAb (98136-1-RR, Clone: 240953C9) (blue) and PE-Conjugated Goat Anti-Rabbit IgG(H+L). Cells were not fixed.



Biolayer interferometry (BLI) kinetic assays of 98279-1-RR against Human PSMA/GCPII were performed. The affinity constant is 49.6 nM.