

For Research Use Only

Anti-Human CCL22/MDC Rabbit Recombinant Antibody, PBS Only

Catalog Number: 98280-1-PBS



Basic Information

Catalog Number:

98280-1-PBS

Size:

1mg, 2 mg/ml

Source:

Rabbit

Isotype:

IgG

GenBank Accession Number:

BC027952

GeneID (NCBI):

6367

UNIPROT ID:

O00626

Full Name:

chemokine (C-C motif) ligand 22

Calculated MW:

93 aa, 11 kDa

Purification Method:

Protein A purification

CloneNo.:

241668D5

Applications

Tested Applications:

FC (Intra)

Species Specificity:

human

Background Information

The C-C motif chemokine ligand 22 (CCL22), also known as MDC, belongs to the group of chemokines, that are both constitutively expressed under homeostatic conditions and inducible upon inflammation. CCL22 is a secreted protein that exerts chemotactic activity for monocytes, dendritic cells, natural killer cells, and for chronically activated T lymphocytes. CCL22 is induced by LPS, IL-4, and IL-13 and in T cells by TCR stimulation. Accumulating studies indicate that CCL22 recruits regulatory T (T-reg) cells into tumor tissues and is expressed in many human tumors.

Storage

Storage:

Store at -80°C.

Storage Buffer:

PBS Only

For technical support and original validation data for this product please contact:

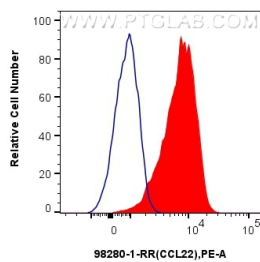
T: 1 (888) 4PTGLAB (1-888-478-4522) (toll free in USA), or 1(312) 455-8498 (outside USA)

E: proteintech@ptglab.com

W: ptglab.com

This product is exclusively available under Proteintech Group brand and is not available to purchase from any other manufacturer.

Selected Validation Data



1x10⁶ human monocyte-derived mature dendritic cells were intracellularly stained with 0.25 ug Anti-Human CCL22 Rabbit RecAb (98280-1-RR, Clone: 241668D5) and PE-Conjugated Goat Anti-Rabbit IgG(H+L) (red), or 0.25 ug Rabbit IgG Isotype Control RecAb (98136-1-RR, Clone: 240953C9) (blue). Cells were incubated with FC Receptor Block prior to staining. Cells were fixed with 4% PFA and permeabilized with Flow Cytometry Perm Buffer (PF00011-C). This data was

