

For Research Use Only

# Anti-Human CCL22/MDC Rabbit Recombinant Antibody

Catalog Number: 98280-1-RR



## Basic Information

**Catalog Number:**

98280-1-RR

**Size:**

100ug, 1000 µg/ml

**Source:**

Rabbit

**Isotype:**

IgG

**GenBank Accession Number:**

BC027952

**GeneID (NCBI):**

6367

**UNIPROT ID:**

O00626

**Full Name:**

chemokine (C-C motif) ligand 22

**Calculated MW:**

93 aa, 11 kDa

**Purification Method:**

Protein A purification

**CloneNo.:**

241668D5

## Applications

**Tested Applications:**

FC (Intra)

**Species Specificity:**

human

## Background Information

The C-C motif chemokine ligand 22 (CCL22), also known as MDC, belongs to the group of chemokines, that are both constitutively expressed under homeostatic conditions and inducible upon inflammation. CCL22 is a secreted protein that exerts chemotactic activity for monocytes, dendritic cells, natural killer cells, and for chronically activated T lymphocytes. CCL22 is induced by LPS, IL-4, and IL-13 and in T cells by TCR stimulation. Accumulating studies indicate that CCL22 recruits regulatory T (T-reg) cells into tumor tissues and is expressed in many human tumors.

## Storage

**Storage:**

Store at 2 - 8°C. Stable for one year after shipment.

**Storage Buffer:**

PBS with 0.09% sodium azide, pH 7.3.

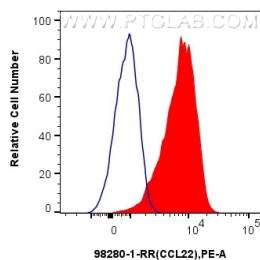
For technical support and original validation data for this product please contact:

T: 1 (888) 4PTGLAB (1-888-478-4522) (toll free in USA), or 1(312) 455-8498 (outside USA)

E: [proteintech@ptglab.com](mailto:proteintech@ptglab.com)  
W: [ptglab.com](http://ptglab.com)

This product is exclusively available under Proteintech Group brand and is not available to purchase from any other manufacturer.

## Selected Validation Data



1x10<sup>6</sup> human monocyte-derived mature dendritic cells were intracellularly stained with 0.25 ug Anti-Human CCL22 Rabbit RecAb (98280-1-RR, Clone:241668D5) and PE-Conjugated Goat Anti-Rabbit IgG(H+L) (red), or 0.25 ug Rabbit IgG Isotype Control RecAb (98136-1-RR, Clone: 240953C9) (blue). Cells were incubated with FC Receptor Block prior to staining. Cells were fixed with 4% PFA and permeabilized with Flow Cytometry Perm Buffer (PF00011-C).

