

For Research Use Only

# Anti-Human KLRB1/CD161 Rabbit Recombinant Antibody

Catalog Number: 98281-1-RR



## Basic Information

Catalog Number:

98281-1-RR

Size:

100ug, 1000 µg/ml

Source:

Rabbit

Isotype:

IgG

GenBank Accession Number:

NM\_002258.3

GeneID (NCBI):

3820

ENSEMBL Gene ID:

ENSG00000111796

UNIPROT ID:

Q12918

Full Name:

killer cell lectin-like receptor  
subfamily B, member 1

Calculated MW:

25 kDa

Purification Method:

Protein A purification

CloneNo.:

242140H5

## Applications

Tested Applications:

FC

Species Specificity:

human

## Background Information

CD161, also known as KLRB1 or NKR-P1A, is a type II transmembrane C-type lectin-like receptor and is expressed on the cell membrane as disulfide-linked homodimer (PMID: 8077657). It is expressed by the majority of NK cells and subsets of peripheral T cells, including both CD4+ and CD8+ T cells, and is expressed preferentially on adult T cells with a "memory" antigenic phenotype (PMID: 8077657; 22566826). Expression of CD161 correlates with the cytotoxic function of CD16+ NK cells, and ligation of CD161 with its ligand LLT1 inhibits NK cell cytotoxicity and cytokine secretion (PMID: 29686665).

## Storage

Storage:

Store at 2 - 8°C. Stable for one year after shipment.

Storage Buffer:

PBS with 0.09% sodium azide, pH 7.3.

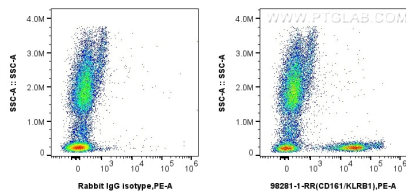
For technical support and original validation data for this product please contact:

T: 1 (888) 4PTGLAB (1-888-478-4522) (toll free  
in USA), or 1(312) 455-8498 (outside USA)

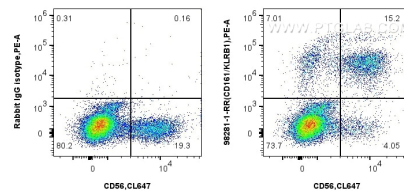
E: [proteintech@ptglab.com](mailto:proteintech@ptglab.com)  
W: [ptglab.com](http://ptglab.com)

This product is exclusively available under Proteintech Group brand and is not available to purchase from any other manufacturer.

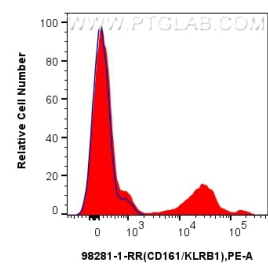
## Selected Validation Data



1x10<sup>6</sup> human peripheral blood leukocytes were surface stained with 0.25 ug Anti-Human CD161/KLRB1 Rabbit RecAb (98281-1-RR, Clone: 242140H5) or 0.25 ug Rabbit IgG Isotype Control RecAb (98136-1-RR, Clone: 240953C9), and PE-Conjugated Goat Anti-Rabbit IgG(H+L). Cells were incubated with FC Receptor Block prior to staining. Cells were not fixed.



1x10<sup>6</sup> human peripheral blood leukocytes were surface stained with 0.25 ug Anti-Human CD161/KLRB1 Rabbit RecAb (98281-1-RR, Clone:242140H5) or 0.25 ug Rabbit IgG Isotype Control RecAb (98136-1-RR, Clone: 240953C9), and PE-Conjugated Goat Anti-Rabbit IgG(H+L). Cells were then stained with CoraLite® Plus 647 Anti-Human NCAM1/CD56. Cells were incubated with FC Receptor Block prior to staining. Cells were not fixed.



1x10<sup>6</sup> human peripheral blood leukocytes were surface stained with 0.25 ug Anti-Human CD161/KLRB1 Rabbit RecAb (98281-1-RR, Clone: 242140H5) (red) or 0.25 ug Rabbit IgG Isotype Control RecAb (98136-1-RR, Clone: 240953C9) (blue), and PE-Conjugated Goat Anti-Rabbit IgG(H+L). Cells were incubated with FC Receptor Block prior to staining. Cells were not fixed.