

For Research Use Only

Anti-Human IL-1R1 Rabbit Recombinant Antibody, PBS Only

Catalog Number: 98282-1-PBS



Basic Information

Catalog Number:

98282-1-PBS

Size:

1mg, 2 mg/ml

Source:

Rabbit

Isotype:

IgG

GenBank Accession Number:

NM_000877.4

GeneID (NCBI):

3554

UNIPROT ID:

P14778

Full Name:

interleukin 1 receptor, type I

Calculated MW:

65 kDa

Purification Method:

Protein A purification

CloneNo.:

242245A10

Applications

Tested Applications:

FC

Species Specificity:

human

Background Information

IL-1R1 (IL-1 receptor type 1, also known as p80, IL-1R-alpha or CD121a) is a 80 kDa transmembrane glycoprotein and a member of the interleukin-1 receptor family (PMID: 35163653; 29248002). It is a receptor for IL-1 α , IL-1 β , and interleukin-1 receptor antagonist (IL-1Ra). IL-1 α and IL-1 β interact with the extracellular domain of IL-1R1, triggering the recruitment of an accessory receptor, the IL-1RAcP, resulting in a functional receptor complex that initiates IL-1R1 signaling cascades (PMID: 35163653). IL-1Ra competes with active IL-1 and blocks binding to their common activating receptor IL-1R1 and, thus, inhibits IL-1 signaling (PMID: 35332327; 11641511). It has been reported that IL-1R1 may also bind IL-38 (PMID: 29248002). IL-1R1 expression has been found in many cell types including T cells, macrophages, neutrophils, eosinophils, basophils, mast cells, fibroblasts, and endothelial cells.

Storage

Storage:

Store at -80°C.

Storage Buffer:

PBS Only

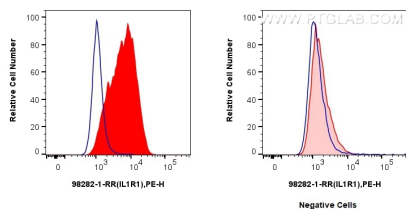
For technical support and original validation data for this product please contact:

T: 1 (888) 4PTGLAB (1-888-478-4522) (toll free in USA), or 1(312) 455-8498 (outside USA)

E: proteintech@ptglab.com
W: ptglab.com

This product is exclusively available under Proteintech Group brand and is not available to purchase from any other manufacturer.

Selected Validation Data



1x10⁶ HeLa cells (left) or SK-OV-3 cells (right) were surface stained with 0.25 ug Anti-Human IL1R1 Rabbit RecAb (98282-1-RR, Clone: 242245A10) (red) or 0.25 ug Rabbit IgG Isotype Control RecAb (98136-1-RR, Clone: 240953C9) (blue), and PE-Conjugated Goat Anti-Rabbit IgG(H+L). Cells were not fixed. This data was developed using the same antibody clone with 98282-1-PBS in a different storage buffer formulation.