

For Research Use Only

# Anti-Human IL-1R1 Rabbit Recombinant Antibody

Catalog Number: 98282-1-RR



## Basic Information

<b>Catalog Number:</b> 98282-1-RR	<b>GenBank Accession Number:</b> NM_000877.4	<b>Purification Method:</b> Protein A purification
<b>Size:</b> 100ug , 1000 µg/ml	<b>GeneID (NCBI):</b> 3554	<b>CloneNo.:</b> 242245A10
<b>Source:</b> Rabbit	<b>UNIPROT ID:</b> P14778	
<b>Isotype:</b> IgG	<b>Full Name:</b> interleukin 1 receptor, type I	
	<b>Calculated MW:</b> 65 kDa	

## Applications

**Tested Applications:**  
FC

**Species Specificity:**  
human

## Background Information

IL-1R1 (IL-1 receptor type 1, also known as p80, IL-1R-alpha or CD121a) is a 80 kDa transmembrane glycoprotein and a member of the interleukin-1 receptor family (PMID: 35163653; 29248002). It is a receptor for IL-1α, IL-1β, and interleukin-1 receptor antagonist (IL-1Ra). IL-1α and IL-1β interact with the extracellular domain of IL-1R1, triggering the recruitment of an accessory receptor, the IL-1RAcP, resulting in a functional receptor complex that initiates IL-1R1 signaling cascades (PMID: 35163653). IL-1Ra competes with active IL-1 and blocks binding to their common activating receptor IL-1R1 and, thus, inhibits IL-1 signaling (PMID: 35332327; 11641511). It has been reported that IL-1R1 may also bind IL-38 (PMID: 29248002). IL-1R1 expression has been found in many cell types including T cells, macrophages, neutrophils, eosinophils, basophils, mast cells, fibroblasts, and endothelial cells.

## Storage

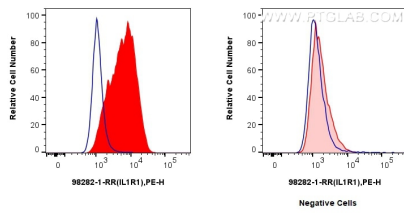
**Storage:**  
Store at 2 - 8°C. Stable for one year after shipment.

**Storage Buffer:**  
PBS with 0.09% sodium azide, pH 7.3.

For technical support and original validation data for this product please contact:  
T: 1 (888) 4PTGLAB (1-888-478-4522) (toll free in USA), or 1(312) 455-8498 (outside USA)  
E: [proteintech@ptglab.com](mailto:proteintech@ptglab.com)  
W: [ptglab.com](http://ptglab.com)

This product is exclusively available under Proteintech Group brand and is not available to purchase from any other manufacturer.

## Selected Validation Data



1x10<sup>6</sup> HeLa cells (left) or SK-OV-3 cells (right) were surface stained with 0.25 ug Anti-Human IL1R1 Rabbit RecAb (98282-1-RR, Clone: 242245A10) (red) or 0.25 ug Rabbit IgG Isotype Control RecAb (98136-1-RR, Clone: 240953C9) (blue), and PE-Conjugated Goat Anti-Rabbit IgG(H+L). Cells were not fixed.