

For Research Use Only

Anti-Mouse FcεR1α Rabbit Recombinant Antibody

Catalog Number: 98289-1-RR



Basic Information

Catalog Number:

98289-1-RR

Size:

100ug , 1000 µg/ml

Source:

Rabbit

Isotype:

IgG

GenBank Accession Number:

NM_010184.2

GeneID (NCBI):

14125

UNIPROT ID:

P20489

Full Name:

Fc receptor, IgE, high affinity I, alpha polypeptide

Calculated MW:

29 kDa

Purification Method:

Protein A purification

CloneNo.:

242008G6

Applications

Tested Applications:

FC

Species Specificity:

mouse

Background Information

Fc epsilon Receptor I alpha (FcεR1α) is a single-pass type I membrane protein that contains 2 immunoglobulin-like domains. FcεR1α forms a tetrameric complex, FcεRI, with one beta and two gamma subunits (PMID: 19406478). FcεRI is the high-affinity receptor for the Fc region of immunoglobulin E (IgE) (PMID: 1532373). It is expressed on mast cells and basophils and plays a central role in the allergic response (PMID: 2148316).

Storage

Storage:

Store at 2 - 8°C. Stable for one year after shipment.

Storage Buffer:

PBS with 0.09% sodium azide, pH 7.3.

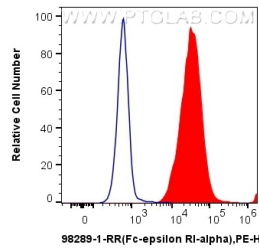
For technical support and original validation data for this product please contact:

T: 1 (888) 4PTGLAB (1-888-478-4522) (toll free in USA), or 1(312) 455-8498 (outside USA)

E: proteintech@ptglab.com
W: ptglab.com

This product is exclusively available under Proteintech Group brand and is not available to purchase from any other manufacturer.

Selected Validation Data



1x10⁶ MC/9 cells were surface stained with 0.25 ug Anti-Mouse Fc-epsilon RI-alpha (FcERI) Rabbit RecAb (98289-1-RR, Clone: 242008G6) (red) or 0.25 ug Rabbit IgG Isotype Control RecAb (98136-1-RR, Clone: 240953C9) (blue), and PE-Conjugated Goat Anti-Rabbit IgG(H+L). Cells were not fixed.