

For Research Use Only

Anti-Human CDCP1/CD318 Rabbit Recombinant Antibody

Catalog Number: 98294-1-RR



Basic Information

Catalog Number:

98294-1-RR

Size:

100ug , 1000 µg/ml

Source:

Rabbit

Isotype:

IgG

GenBank Accession Number:

BC153169

GeneID (NCBI):

64866

UNIPROT ID:

Q9H5V8

Full Name:

CUB domain containing protein 1

Purification Method:

Protein A purification

CloneNo.:

242428F9

Applications

Tested Applications:

FC

Species Specificity:

human

Background Information

CDCP1, also called CD318, TRASK, and SIMA 135, is a 135-140 kDa transmembrane protein containing three CUB domains within the extracellular region and a hexalysine stretch within the cytoplasmic region. A soluble form with MW 80 kDa (p80) is cleaved at an unidentified site on the N-terminal side. CDCP1 is a novel marker for hematopoietic stem cells.

Storage

Storage:

Store at 2 - 8°C. Stable for one year after shipment.

Storage Buffer:

PBS with 0.09% sodium azide, pH 7.3.

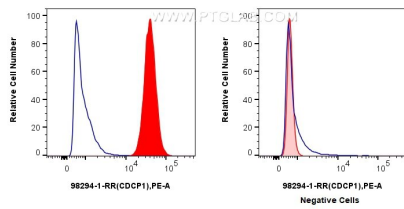
For technical support and original validation data for this product please contact:

T: 1 (888) 4PTGLAB (1-888-478-4522) (toll free in USA), or 1(312) 455-8498 (outside USA)

E: proteintech@ptglab.com
W: ptglab.com

This product is exclusively available under Proteintech Group brand and is not available to purchase from any other manufacturer.

Selected Validation Data



1x10⁶ HT-29 cells(left) or MCF-7 cells(right) were surface stained with 0.25 ug Anti-Human CDCP1 Rabbit RecAb (98294-1-RR, Clone:242428F9) (red) or 0.25 ug Rabbit IgG Isotype Control RecAb (98136-1-RR, Clone: 240953C9) (blue), and PE-Conjugated Goat Anti-Rabbit IgG(H+L). Cells were not fixed.