

For Research Use Only

# Anti-Rabbit CD38 Mouse Recombinant Antibody, PBS Only

Catalog Number: 98306-6-PBS



## Basic Information

Catalog Number:

98306-6-PBS

Size:

1mg, 3 mg/ml

Source:

Mouse

Isotype:

IgG2a

Immunogen Catalog Number:

EG2484

GenBank Accession Number:

GeneID (NCBI):

100009409

UNIPROT ID:

Q9MZ03

Full Name:

CD38

Purification Method:

Protein A purification

CloneNo.:

250406C8

## Applications

Tested Applications:

FC

Species Specificity:

rabbit

## Background Information

CD38, also known as ADP-ribosyl cyclase 1, is a type II transmembrane glycoprotein with a short N-terminal cytoplasmic tail, a single membrane-spanning domain, and a C-terminal extracellular region with four N-glycosylation sites (PMID: 2319135). The extracellular domain of CD38 has bifunctional enzyme activities that catalyze synthesis of cyclic ADP ribose from nicotinamide adenine dinucleotide (NAD) and hydrolysis of cyclic ADP ribose to adenosine diphosphoribose (PMID: 10636863). CD38 is expressed on a variety of hematopoietic and non-hematopoietic cells and is involved in diverse processes such as generation of calcium-mobilizing metabolites, cell activation, and chemotaxis (PMID: 25938500).

## Storage

Storage:

Store at -80°C.

Storage Buffer:

PBS only, pH7.3

For technical support and original validation data for this product please contact:

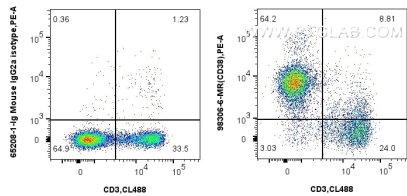
T: 1 (888) 4PTGLAB (1-888-478-4522) (toll free in USA), or 1(312) 455-8498 (outside USA)

E: [proteintech@ptglab.com](mailto:proteintech@ptglab.com)

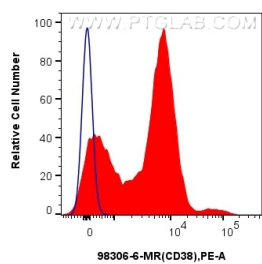
W: [ptglab.com](http://ptglab.com)

This product is exclusively available under Proteintech Group brand and is not available to purchase from any other manufacturer.

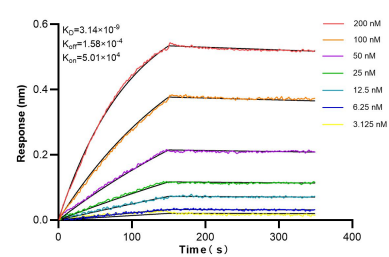
Selected Validation Data



1x10<sup>6</sup> rabbit splenocytes were surface stained with 0.25 ug Anti-Rabbit CD38 Mouse RecAb (98306-6-MR, Clone: 250406C8) or Mouse IgG2a Isotype Control (C1.18.4) (65208-1-Ig, Clone: C1.18.4), and PE-conjugated Nano-Secondary<sup>®</sup> anti-mouse IgG2a(recombinant VHH). Cells were co-stained with CoraLite<sup>®</sup> Plus 488 Anti-Rabbit CD3. Cells were not fixed. This data was developed using the same antibody clone with 98306-6-PBS in a different storage



1x10<sup>6</sup> rabbit splenocytes were surface stained with 0.25 ug Anti-Rabbit CD38 Mouse RecAb (98306-6-MR, Clone: 250406C8) (red) or Mouse IgG2a Isotype Control (C1.18.4) (65208-1-Ig, Clone: C1.18.4) (blue), and PE-conjugated Nano-Secondary<sup>®</sup> anti-mouse IgG2a(recombinant VHH). Cells were co-stained with CoraLite<sup>®</sup> Plus 488 Anti-Rabbit CD3. Cells were not fixed. This data was developed using the same antibody clone with 98306-6-PBS in a different storage



Biolayer interferometry (BLI) kinetic assays of 98306-6-MR against Rabbit CD38 were performed. The affinity constant is 3.14 nM.