

For Research Use Only

# Anti-Rat IL-1 beta Rabbit Recombinant Antibody, PBS Only

Catalog Number: 98310-2-PBS



## Basic Information

Catalog Number:

98310-2-PBS

Size:

1mg, 2 mg/ml

Source:

Rabbit

Isotype:

IgG

GenBank Accession Number:

NM\_031512

GeneID (NCBI):

24494

UNIPROT ID:

Q63264

Full Name:

interleukin 1 beta

Calculated MW:

31 kDa

Purification Method:

Protein A purification

CloneNo.:

241001F11

## Applications

Tested Applications:

FC (Intra)

Species Specificity:

rat

## Background Information

Interleukin-1, produced mainly by blood monocytes, mediates the panoply of host reactions collectively known as acute phase response. It is identical to endogenous pyrogen. The multiple biologic activities that define IL1 are properties of a 15- to 18-kD protein that is derived from a 30- to 35-kD precursor. Interleukin 1 $\beta$  (IL-1B) is a member of the interleukin 1 cytokine family. It is a pro-inflammatory cytokine against infection, playing an important role in the pathogenesis of cancers. It signals through various adaptor proteins and kinases that lead to activation of numerous downstream targets.

## Storage

Storage:

Store at -80°C.

Storage Buffer:

PBS Only

For technical support and original validation data for this product please contact:

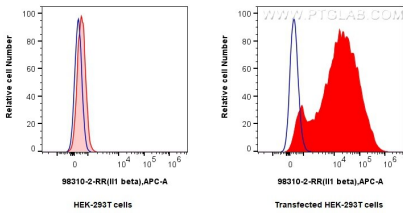
T: 1 (888) 4PTGLAB (1-888-478-4522) (toll free in USA), or 1(312) 455-8498 (outside USA)

E: [proteintech@ptglab.com](mailto:proteintech@ptglab.com)  
W: [ptglab.com](http://ptglab.com)

This product is exclusively available under Proteintech Group brand and is not available to purchase from any other manufacturer.

Selected Validation Data

1x10<sup>6</sup> HEK-293T cells or IL-1 beta transfected HEK-293T cells were intracellularly stained with 0.25 ug Anti-Rat IL1 beta Rabbit RecAb (98310-2-RR, Clone: 241001F11) and Multi-rAb CoraLite® Plus 647-Goat Anti-Rabbit Recombinant Secondary Antibody (H+L) (RGAR005). Cells were fixed with 4% PFA and permeabilized with Flow Cytometry Perm Buffer (PF00011-C). This data was developed using the same antibody clone with 98310-2-PBS in a



1x10<sup>6</sup> HEK-293T cells or IL-1 beta transfected HEK-293T cells were intracellularly stained with 0.25 ug Anti-Rat IL1 beta Rabbit RecAb (98310-2-RR, Clone: 241001F11) and Multi-rAb CoraLite® Plus 647-Goat Anti-Rabbit Recombinant Secondary Antibody (H+L) (RGAR005) (red), or Rabbit IgG Isotype Control RecAb (98136-1-RR, Clone: 240953C9) (blue). Cells were fixed with 4% PFA and permeabilized with Flow Cytometry Perm Buffer (PF00011-C).