

For Research Use Only

Anti-Human EPCR/CD201 Rabbit Recombinant Antibody, PBS Only

Catalog Number: 98325-1-PBS



Basic Information

Catalog Number:

98325-1-PBS

Size:

1mg, 2 mg/ml

Source:

Rabbit

Isotype:

IgG

GenBank Accession Number:

BC014451

GeneID (NCBI):

10544

UNIPROT ID:

Q9UNN8

Full Name:

protein C receptor, endothelial (EPCR)

Calculated MW:

238 aa, 27 kDa

Purification Method:

Protein A purification

CloneNo.:

241806D7

Applications

Tested Applications:

FC

Species Specificity:

human

Background Information

EPCR (endothelial cell protein C receptor), also known as CD201, is a type 1 transmembrane protein that is primarily found on endothelial cells. It exhibits sequence and three-dimensional structural homology with the major histocompatibility class 1/CD1 family of proteins, particularly CD1d. It binds activated protein C and enhances protein C activation by the thrombin-thrombomodulin complex. It plays a role in the protein C pathway controlling blood coagulation.

Storage

Storage:

Store at -80°C.

Storage Buffer:

PBS Only

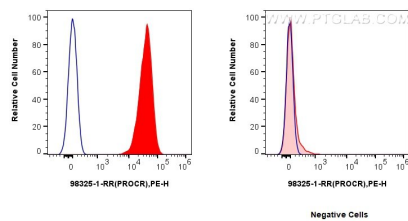
For technical support and original validation data for this product please contact:

T: 1 (888) 4PTGLAB (1-888-478-4522) (toll free in USA), or 1(312) 455-8498 (outside USA)

E: proteintech@ptglab.com
W: ptglab.com

This product is exclusively available under Proteintech Group brand and is not available to purchase from any other manufacturer.

Selected Validation Data



1x10⁶ HUVEC cells (left) or Jurkat cells (right) were surface stained with 0.25 ug Anti-Human PROCR Rabbit RecAb (98325-1-RR, Clone: 241806D7) (red) or Rabbit IgG Isotype Control Recombinant Antibody (98136-1-RR, Clone: 240953C9)(blue), and PE-Conjugated Goat Anti-Rabbit IgG(H+L). Cells were not fixed. This data was developed using the same antibody clone with 98325-1-PBS in a different storage buffer formulation.