

For Research Use Only

Anti-Human LAIR1 Rabbit Recombinant Antibody, PBS Only

Catalog Number: 98326-1-PBS



Basic Information

Catalog Number:

98326-1-PBS

Size:

1mg, 2 mg/ml

Source:

Rabbit

Isotype:

IgG

GenBank Accession Number:

BC027899

GeneID (NCBI):

3903

UNIPROT ID:

Q6GT88

Full Name:

leukocyte-associated
immunoglobulin-like receptor 1

Calculated MW:

287 aa, 31 kDa

Purification Method:

Protein A purification

CloneNo.:

241805G2

Applications

Tested Applications:

FC

Species Specificity:

human

Background Information

Leukocyte-associated immunoglobulin-like receptor 1 (LAIR1) is a transmembrane glycoprotein with a single immunoglobulin-like domain and a cytoplasmic tail containing two immune receptor tyrosine-based inhibitory motifs (PMID: 9285412). LAIR1 is expressed on the majority of human PBMCs, including NK, T, B, monocytes, and dendritic cells, as well as the majority of thymocytes (PMID: 10229813). It functions as an inhibitory receptor that plays a constitutive negative regulatory role on cytolytic function of NK cells, B cells and T cells. LAIR1 is a collagen receptor (PMID: 16754721). Tumor-expressed collagens can modulate immune cell function through the inhibitory collagen receptor LAIR1 (PMID: 21955987).

Storage

Storage:

Store at -80°C.

Storage Buffer:

PBS Only

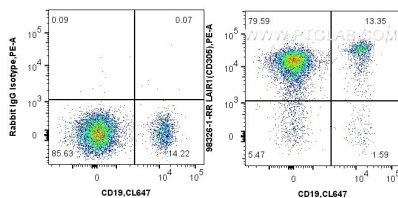
For technical support and original validation data for this product please contact:

T: 1 (888) 4PTGLAB (1-888-478-4522) (toll free
in USA), or 1(312) 455-8498 (outside USA)

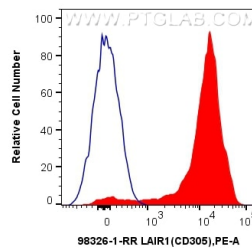
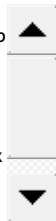
E: proteintech@ptglab.com
W: ptglab.com

This product is exclusively available under Proteintech Group brand and is not available to purchase from any other manufacturer.

Selected Validation Data



1x10⁶ human PBMCs were surface stained with 0.13 ug Anti-Human LAIR1 Rabbit RecAb (98326-1-RR, Clone:241805G2) or Rabbit IgG Isotype Control RecAb (98136-1-RR, Clone: 240953C9) and PE-Conjugated Goat Anti-Rabbit IgG(H+L). Cells were then stained with CoraLite® Plus 647 Anti-Human CD19. Cells were incubated with FC Receptor Block prior to staining. Cells were not fixed. This data was developed using the same antibody clone with 98326-1-PBS in a



1x10⁶ human PBMCs were surface stained with 0.13 ug Anti-Human LAIR1 Rabbit RecAb (98326-1-RR, Clone:241805G2) (red) or Rabbit IgG Isotype Control RecAb (98136-1-RR, Clone: 240953C9) (blue), and PE-Conjugated Goat Anti-Rabbit IgG(H+L). Cells were incubated with FC Receptor Block prior to staining. Cells were not fixed. This data was developed using the same antibody clone with 98326-1-PBS in a different storage buffer formulation.