

For Research Use Only

Anti-Human TLR4/CD284 Rabbit Recombinant Antibody, PBS Only

Catalog Number: 98327-1-PBS



Basic Information

Catalog Number:

98327-1-PBS

Size:

1mg, 2 mg/ml

Source:

Rabbit

Isotype:

IgG

GenBank Accession Number:

NM_138554

GeneID (NCBI):

7099

UNIPROT ID:

O00206

Full Name:

toll-like receptor 4

Calculated MW:

96 kDa

Purification Method:

Protein A purification

CloneNo.:

242067C1

Applications

Tested Applications:

FC

Species Specificity:

human

Background Information

TLR4, also named as CD284, belongs to the Toll-like receptor family. TLR4 interacts with LY96 and CD14 to mediate the innate immune response to bacterial lipopolysaccharide (LPS). TLR4 acts via MYD88, TIRAP and TRAF6, leading to NF- κ B activation, cytokine secretion and the inflammatory response. Three alternatively spliced transcript variants that encode different protein isoforms have been described.

Storage

Storage:

Store at -80°C.

Storage Buffer:

PBS Only

For technical support and original validation data for this product please contact:

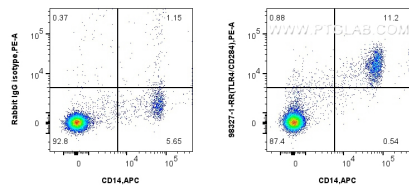
T: 1 (888) 4PTGLAB (1-888-478-4522) (toll free in USA), or 1(312) 455-8498 (outside USA)

E: proteintech@ptglab.com

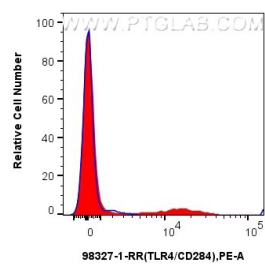
W: ptglab.com

This product is exclusively available under Proteintech Group brand and is not available to purchase from any other manufacturer.

Selected Validation Data



1x10⁶ human PBMCs were surface stained with 0.25 ug Anti-Human TLR4/CD284 Rabbit RecAb (98327-1-RR, Clone: 242067C1) and PE-Conjugated Donkey Anti-Rabbit IgG(H+L), or 0.25 ug Rabbit IgG Isotype Control RecAb (98136-1-RR, Clone: 240953C9). Cells were co-stained with APC Anti-Human CD14 Rabbit Recombinant Antibody (APC-98040, Clone: 230332D7). Cells were incubated with FC Receptor Block prior to staining. Cells were not fixed. This data was developed



1x10⁶ human PBMCs were surface stained with 0.25 ug Anti-Human TLR4/CD284 Rabbit RecAb (98327-1-RR, Clone:242067C1) (red) and PE-Conjugated Donkey Anti-Rabbit IgG(H+L), or 0.25 ug Rabbit IgG Isotype Control RecAb (98136-1-RR, Clone: 240953C9) (blue). Cells were incubated with FC Receptor Block prior to staining. Cells were not fixed. This data was developed using the same antibody clone with 98327-1-PBS in a different storage buffer formulation.