

For Research Use Only

Anti-Human JAM-A/CD321 Rabbit Recombinant Antibody, PBS Only

Catalog Number: 98328-3-PBS



Basic Information

Catalog Number:

98328-3-PBS

Size:

1mg, 2 mg/ml

Source:

Rabbit

Isotype:

IgG

Immunogen Catalog Number:

EG1372

GenBank Accession Number:

NM_016946.6

GeneID (NCBI):

50848

UNIPROT ID:

Q9Y624-1

Full Name:

F11 receptor

Calculated MW:

33kDa

Purification Method:

Protein A purification

CloneNo.:

242290B3

Applications

Tested Applications:

FC

Species Specificity:

human

Background Information

Junctional adhesion molecule A (JAM-A), also known as CD321 or F11 receptor (F11R), was first identified in human platelets as a 32/35 kDa protein duplex that serves as the receptor for a functional antibody that activates platelets. It seems to play a role in epithelial tight junction formation. It was also reported to function as a receptor for reovirus and a ligand for the integrin LFA1.

Storage

Storage:

Store at -80°C.

Storage Buffer:

PBS only, pH7.3

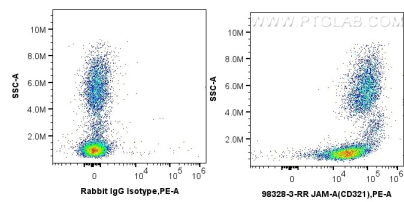
For technical support and original validation data for this product please contact:

T: 1 (888) 4PTGLAB (1-888-478-4522) (toll free in USA), or 1(312) 455-8498 (outside USA)

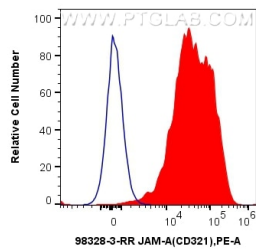
E: proteintech@ptglab.com
W: ptglab.com

This product is exclusively available under Proteintech Group brand and is not available to purchase from any other manufacturer.

Selected Validation Data



1x10⁶ human peripheral blood leukocytes were surface stained with 0.25 ug Anti-Human JAM-A/CD321 Rabbit RecAb (98328-3-RR, Clone: 242290B3) or Rabbit IgG Isotype Control RecAb (98136-1-RR, Clone: 240953C9), and PE-Conjugated Goat Anti-Rabbit IgG(H+L). Cells were incubated with FC Receptor Block prior to staining. Cells were not fixed. This data was developed using the same antibody clone with 98328-3-PBS in a different storage buffer formulation.



1x10⁶ human peripheral blood leukocytes were surface stained with 0.25 ug Anti-Human JAM-A/CD321 Rabbit RecAb (98328-3-RR, Clone:242290B3) (red) or 0.25 ug Rabbit IgG Isotype Control RecAb (98136-1-RR, Clone: 240953C9) (blue), and PE-Conjugated Goat Anti-Rabbit IgG(H+L). Cells were incubated with FC Receptor Block prior to staining. Cells were not fixed. This data was developed using the same antibody clone with 98328-3-PBS in a different storage