

For Research Use Only

Anti-Human CD44 Rabbit Recombinant Antibody, PBS Only

Catalog Number: 98333-3-PBS



Basic Information

Catalog Number:

98333-3-PBS

Size:

1mg, 2 mg/ml

Source:

Rabbit

Isotype:

IgG

GenBank Accession Number:

NM_000610.3

GeneID (NCBI):

960

ENSEMBL Gene ID:

ENSG00000026508

UNIPROT ID:

P16070-1

Full Name:

CD44 molecule (Indian blood group)

Calculated MW:

82 kDa

Purification Method:

Protein A purification

CloneNo.:

242345G9

Applications

Tested Applications:

FC

Species Specificity:

human

Background Information

CD44 is a type I transmembrane glycoprotein expressed on embryonic stem cells and in various levels on other cell types including connective tissues and bone marrow. CD44 expression is also upregulated in subpopulations of cancer cells and is recognized as a molecular marker for cancer stem cells (PMID: 29747682). It is a cell-surface receptor that mediates cell-cell and cell-matrix interactions through its affinity for hyaluronic acid (HA) and possibly also through its affinity for other ligands (PMID: 10694938). Adhesion with HA plays an important role in cell migration, tumor growth and progression. CD44 is also involved in lymphocyte activation, recirculation and homing, and in hematopoiesis.

Storage

Storage:

Store at -80°C.

Storage Buffer:

PBS Only

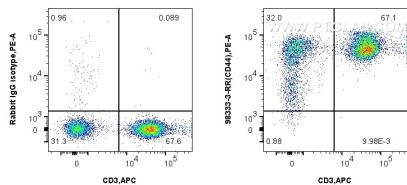
For technical support and original validation data for this product please contact:

T: 1 (888) 4PTGLAB (1-888-478-4522) (toll free in USA), or 1(312) 455-8498 (outside USA)

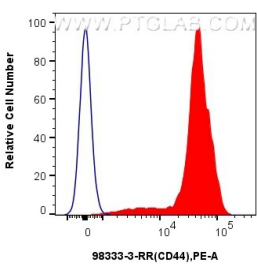
E: proteintech@ptglab.com
W: ptglab.com

This product is exclusively available under Proteintech Group brand and is not available to purchase from any other manufacturer.

Selected Validation Data



1x10⁶ human PBMCs were surface stained with 0.25 ug Anti-Human CD44 Rabbit RecAb (98333-3-RR, Clone:242345G9) and PE-Conjugated Goat Anti-Rabbit IgG(H+L), or 0.25 ug Rabbit IgG Isotype Control RecAb (98136-1-RR, Clone: 240953C9). Cells were then stained with APC Anti-Human CD3 (OKT3) Mouse IgG2a Recombinant Antibody (APC-65569, Clone: OKT3). Cells were incubated with FC Receptor Block prior to staining. Cells were not fixed. This data was



1x10⁶ human PBMCs were surface stained with 0.25 ug Anti-Human CD44 Rabbit RecAb (98333-3-RR, Clone:242345G9) (red) and PE-Conjugated Goat Anti-Rabbit IgG(H+L), or 0.25 ug Rabbit IgG Isotype Control RecAb (98136-1-RR, Clone: 240953C9) (blue). Cells were incubated with FC Receptor Block prior to staining. Cells were not fixed. This data was developed using the same antibody clone with 98333-3-PBS in a different storage buffer formulation.