

For Research Use Only

Anti-Human NKp46/NCR1 Rabbit Recombinant Antibody, PBS Only

Catalog Number: 98340-1-PBS



Basic Information

Catalog Number:

98340-1-PBS

Size:

1mg, 2 mg/ml

Source:

Rabbit

Isotype:

IgG

GenBank Accession Number:

GeneID (NCBI):

9437

UNIPROT ID:

O76036-1

Full Name:

natural cytotoxicity triggering receptor 1

Calculated MW:

34kDa

Purification Method:

Protein A purification

CloneNo.:

242549D12

Applications

Tested Applications:

FC

Species Specificity:

human

Background Information

NKp46, also known as NCR1 or CD335, is an Ig-like superfamily cell surface receptor that is highly conserved in mammals (PMID: 22021440). NKp46 is a type I transmembrane glycoprotein consisting of two extracellular Ig-like domains, a transmembrane domain, and an intracellular tail (PMID: 9730896). It is expressed on NK cells, rare T-cell subsets and a mucosal population of NKp46+ innate lymphoid cells (PMID: 9730896; 22021440). NKp46 is the major triggering receptor involved in the natural cytotoxicity (PMID: 10359120; 10092106; 15356098).

Storage

Storage:

Store at -80°C.

Storage Buffer:

PBS Only

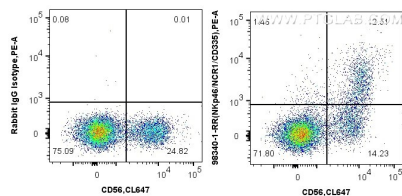
For technical support and original validation data for this product please contact:

T: 1 (888) 4PTGLAB (1-888-478-4522) (toll free in USA), or 1(312) 455-8498 (outside USA)

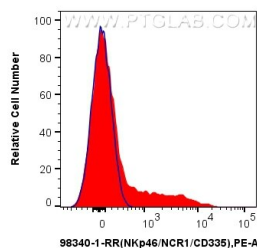
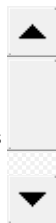
E: proteintech@ptglab.com
W: ptglab.com

This product is exclusively available under Proteintech Group brand and is not available to purchase from any other manufacturer.

Selected Validation Data



1x10⁶ human PBMCs were surface stained with 0.25 ug Anti-Human NKp46/NCR1 Rabbit RecAb (98340-1-RR, Clone: 242549D12) or Rabbit IgG Isotype Control RecAb (98136-1-RR, Clone: 240953C9) and PE-Conjugated Goat Anti-Rabbit IgG(H+L). Cells were then stained with CoraLite® Plus 647 Anti-Human NCAM1/CD56. Cells were incubated with FC Receptor Block prior to staining. Cells were not fixed. This data was developed using the same antibody clone



1x10⁶ human PBMCs were surface stained with 0.25 ug Anti-Human NKp46/NCR1 Rabbit RecAb (98340-1-RR, Clone: 242549D12) (red) or Rabbit IgG Isotype Control RecAb (98136-1-RR, Clone: 240953C9) (blue) and PE-Conjugated Goat Anti-Rabbit IgG(H+L). Cells were incubated with FC Receptor Block prior to staining. Cells were not fixed. This data was developed using the same antibody clone with 98340-1-PBS in a different storage buffer formulation.