

For Research Use Only

Anti-Human EGFR Rabbit Recombinant Antibody, PBS Only

Catalog Number: 98344-1-PBS



Basic Information

Catalog Number:

98344-1-PBS

Size:

1mg, 2 mg/ml

Source:

Rabbit

Isotype:

IgG

GenBank Accession Number:

NM_005228.5

GeneID (NCBI):

1956

UNIPROT ID:

P00533

Full Name:

epidermal growth factor receptor
(erythroblastic leukemia viral (v-erb-
b) oncogene homolog, avian)

Calculated MW:

134kd

Purification Method:

Protein A purification

CloneNo.:

242684A1

Applications

Tested Applications:

FC

Species Specificity:

human

Background Information

EGFR, also named as ERBB1, is a cell-surface receptor for members of the epidermal growth factor family (EGF-family) of extracellular protein ligands. Binding of the protein to a ligand induces receptor dimerization and tyrosine autophosphorylation and leads to cell proliferation. The gene resides on chromosome 7p12, encoding a 170 kDa membrane-associated glycoprotein. Recent studies have shown EGFR plays a critical role in cancer development and progression, including cell proliferation, apoptosis, angiogenesis, and metastatic spread. Mutations in this gene are associated with lung cancer.

Storage

Storage:

Store at -80°C.

Storage Buffer:

PBS only

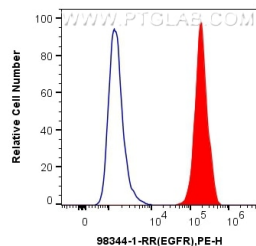
For technical support and original validation data for this product please contact:

T: 1 (888) 4PTGLAB (1-888-478-4522) (toll free
in USA), or 1(312) 455-8498 (outside USA)

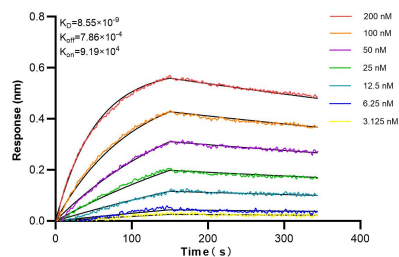
E: proteintech@ptglab.com
W: ptglab.com

This product is exclusively available under Proteintech Group brand and is not available to purchase from any other manufacturer.

Selected Validation Data



1x10⁶ A431 cells were surface stained with 0.25 ug Anti-Human EGFR Rabbit RecAb (98344-1-RR, Clone: 242684A1) (red) or 0.25 ug Rabbit IgG Isotype Control RecAb (98136-1-RR, Clone: 240953C9) (blue), and PE-Conjugated Goat Anti-Rabbit IgG(H+L). Cells were not fixed. This data was developed using the same antibody clone with 98344-1-PBS in a different storage buffer formulation.



Biolayer interferometry (BLI) kinetic assays of 98344-1-RR against Human EGFR were performed. The affinity constant is 8.55 nM.