

For Research Use Only

Anti-Mouse CXCR2 Rabbit Recombinant Antibody, PBS Only

Catalog Number: 98353-4-PBS



Basic Information

Catalog Number:

98353-4-PBS

Size:

1mg, 2 mg/ml

Source:

Rabbit

Isotype:

IgG

Immunogen Catalog Number:

EG2228

GenBank Accession Number:

NM_009909.3

GeneID (NCBI):

12765

UNIPROT ID:

P35343

Full Name:

interleukin 8 receptor, beta

Calculated MW:

40 kDa

Purification Method:

Protein A purification

CloneNo.:

242766G3

Applications

Tested Applications:

FC

Species Specificity:

mouse

Background Information

CXCR2, also named as Cmkar2, Gpcr16, Il8rb or CD182, belongs to the G-protein coupled receptor 1 family. CXCR2 is a receptor for interleukin-8, which is a powerful neutrophil chemotactic factor. Binding of IL-8 to the receptor causes activation of neutrophils. This response is mediated via a G-protein that activates a phosphatidylinositol-calcium second messenger system. CXCR2 binds to IL-8 with high affinity. CXCR2 also binds with high affinity to CXCL3, GRO/MGSA and NAP-2.

Storage

Storage:

Store at -80°C.

Storage Buffer:

PBS only, pH7.3

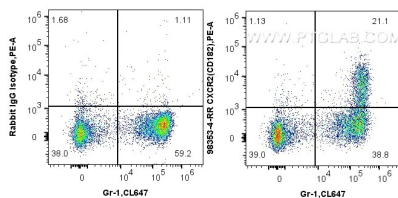
For technical support and original validation data for this product please contact:

T: 1 (888) 4PTGLAB (1-888-478-4522) (toll free in USA), or 1(312) 455-8498 (outside USA)

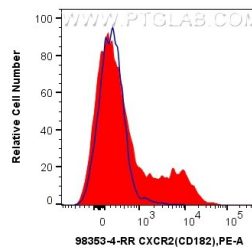
E: proteintech@ptglab.com
W: ptglab.com

This product is exclusively available under Proteintech Group brand and is not available to purchase from any other manufacturer.

Selected Validation Data



1x10⁶ mouse bone marrow cells were surface stained with 0.25 ug Anti-Mouse CXCR2 Rabbit RecAb (98353-4-RR, Clone: 242766G3) or Rabbit IgG Isotype Control RecAb (98136-1-RR, Clone: 240953C9), and PE-Conjugated Goat Anti-Rabbit IgG(H+L), and PE-Conjugated Goat Anti-Rabbit IgG(H+L). Cells were co-stained with CoraLite® Plus 647 Anti-Mouse Ly-6G/Ly-6C (Gr-1). Cells were not fixed. This data was developed using the same antibody clone with 98353-4-PBS in a different storage buffer formulation.



1x10⁶ mouse bone marrow cells were surface stained with 0.25 ug Anti-Mouse CXCR2 Rabbit RecAb (98353-4-RR, Clone: 242766G3) (red) or Rabbit IgG Isotype Control RecAb (98136-1-RR, Clone: 240953C9), and PE-Conjugated Goat Anti-Rabbit IgG(H+L). Cells were not fixed. This data was developed using the same antibody clone with 98353-4-PBS in a different storage buffer formulation.